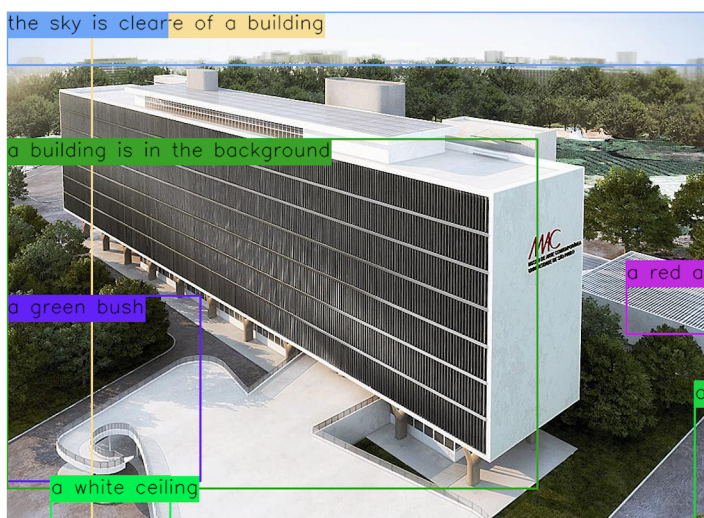


A Crack within the museum

MAC

Problematizing Computer Vision of Commercial AIs



In recent years, commercial systems based on artificial intelligence have emerged and have been gaining ground in the daily life of large cities, however almost imperceptibly to end users. We are in contact with these systems when we use translation services, product recommendation, object and person detection, and many other services. These systems are trained with large volumes of data, and, inevitably, present some type of ideological bias.

From the analysis of contemporary artwork figures using the Art Decoder* platform, we realized the possibility of looking at these systems from a critical perspective. We present this zine, with works selected collectively from the digital collection of the Museu de Arte Contemporânea da Universidade de São Paulo (MAC), being a concern to highlight some of the ideological biases present in some of those commercial computer vision systems, which, as we have seen in our research, follow a capitalist, consumerist and sometimes misogynistic logic. In addition, we highlight other moments when our platform is unable to understand artworks resulting in interpretations of great poetic value.

This publication wouldn't be possible without the support of GECID and IEA (Instituto de Estudos Avançados da USP) members, and the commitment of the participants of the workshop "A Crack Within the Museum", carried out by Lucas Nunes Sequeira and Rafael Tsuha members of GECID**, on February 6, 2020, at CAIA - InovaUSP, São Paulo.

Good reading!

* Art Decoder is a platform created by Gabriel Pereira and Bernardo Fontes, part of our group and have been used since 2018 to reveal the behavior of commercial AIs (Amazon Rekognition, Google Cloud Vision, Microsoft Azure, ClarifAI, Densecap, Facebook Detectron, IBM Watson and Darknet YOLO APIs) from the use of contemporary art images. Another recent project with Art Decoder was the short movie *Recoding Art* (<https://vimeo.com/321866181>) and the academic article "Ways of Seeing with Computer Vision: Artificial Intelligence and Institutional Critique", both made by Gabriel Pereira and Bruno Moreschi as part of Deviant Practice Grant - Van Abbemuseum.

** We are part of the Grupo de Experiências Críticas em Infraestruturas Digitais (GECID), an activist group of researchers from different areas of knowledge coordinated by artist Bruno Moreschi and located at the Comunidade de Arte e Inteligência Artificial (CAIA) / Center for Artificial Intelligence (C4AI), coordinated by professor Fabio Cozman / Inova USP - University of São Paulo, Brazil. Our work involves a set of experiences that aims to think and problematize contemporary infrastructures based on a logic different from that applied in technology centers in the Global North. We are interested in encouraging studies that think about technology not in an abstract way, but inserted in determined contexts, with social implications.

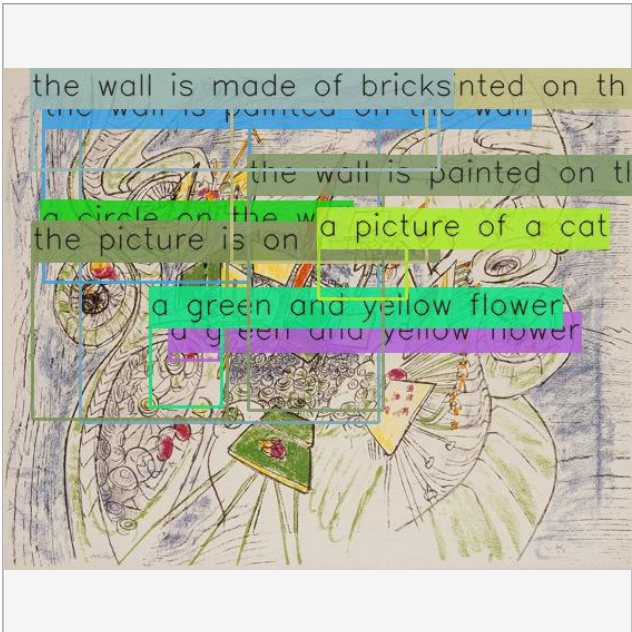
Roberto Sebastián Matta

Composição

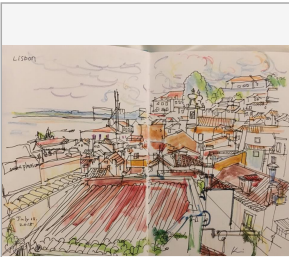
Unknown year



Drawing as child art.



visually similar



Google Cloud Vision

best guess: flower

violence:
very unlikely

medical:
very unlikely

adult:
very unlikely

spoof:
very unlikely

racy:
very unlikely

labels: 83% drawing
79% illustration
78% art

77% line
69% sketch
58% artwork

58% plant
55% modern art
55% visual arts

text: (le

Microsoft Azure

category:
text map

is adult content? False 0% adult

is racy content? False 1% racy

labels:
text
map
drawing
sketch
child art

illustration

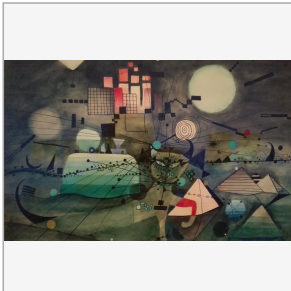
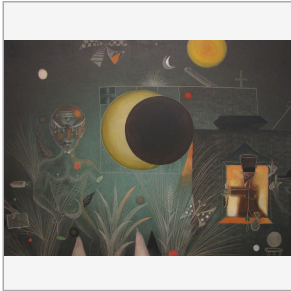
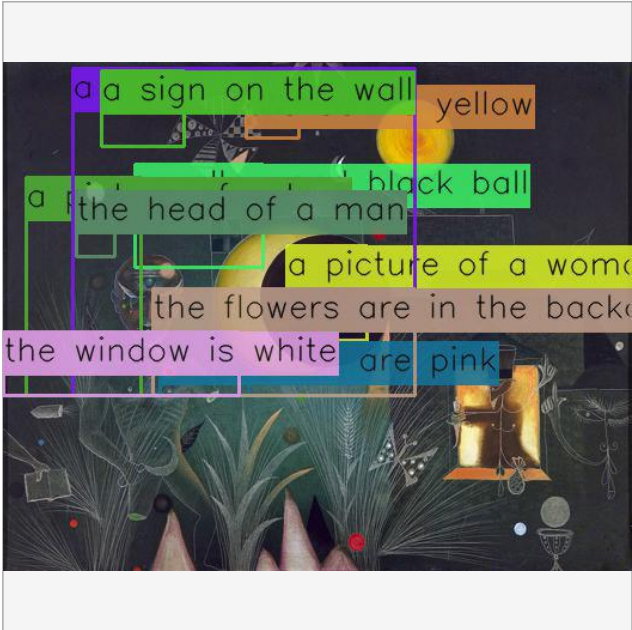
Antoni Tàpies

Àsia

1951



Common sense and more romantic and descriptive. Read as helmet, apparel, moon, space and no person.



visually similar

Amazon Rekognition

labels:

- 83% art
- 83% helmet
- 83% apparel
- 83% clothing
- 79% person

- 79% human
- 65% graphics
- 58% window display
- 58% shop

ClarifAI

safe for work? 0% nsfw

labels:

- | | | | |
|---------------|------------------|--------------|----------------|
| 99% moon | 92% science | 89% flame | 82% graphic |
| 96% space | 91% dark | 89% abstract | 82% art |
| 95% astronomy | 91% no person | 89% design | 81% technology |
| 95% light | 91% illustration | 84% sun | 81% galaxy |
| | 90% desktop | 84% cosmos | 81% smoke |

moderation: 88% safe 11% suggestive 0% explicit 0% gore 0% drug

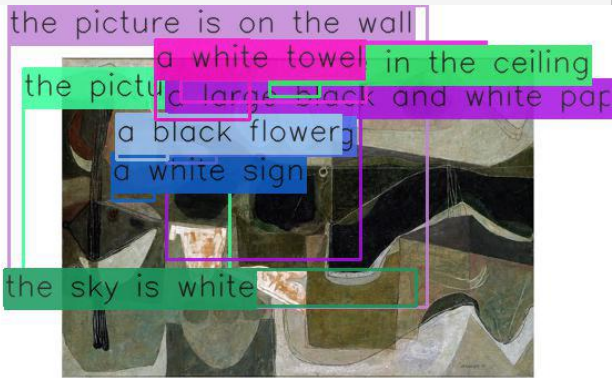
Armando Morales

Sereias II

1958



Text or scribble is no drug.



visually similar



Microsoft Azure

category:
others

is adult content? False 1% adult
is racy content? False 1% racy

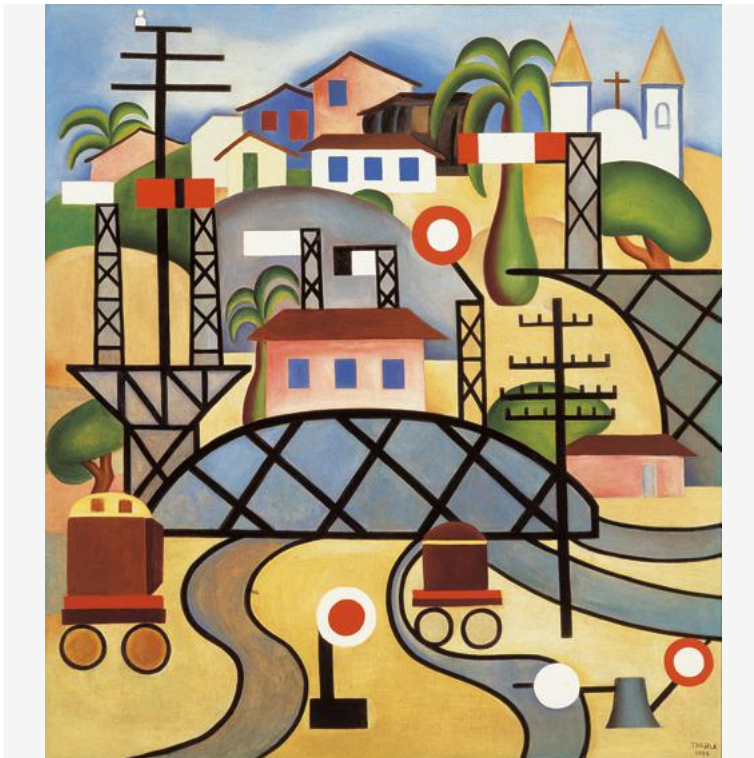
labels:	different	table
drawing	text	board
photo	items	room
art	sketch	
small	old	
child art	painting	

ClarifAI

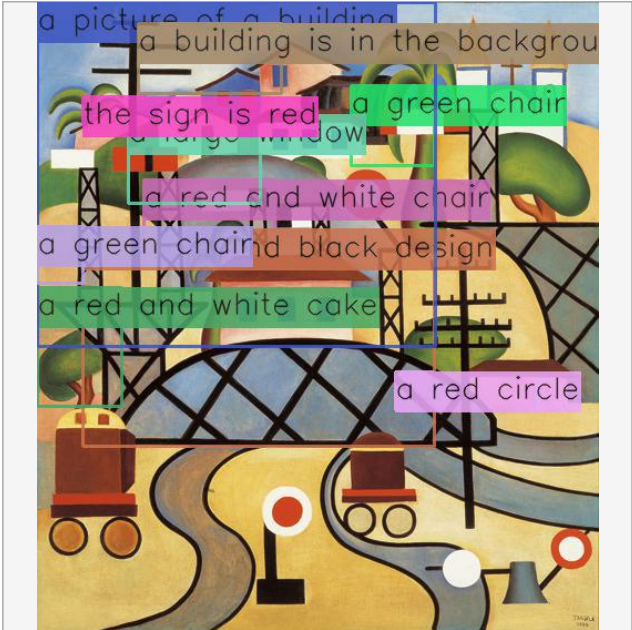
safe for work? 0% nsfw

labels:	92% texture	88% visuals	82% scribble		
98% retro	92% old	88% vintage	81% antique		
98% art	91% desktop	86% collage	79% modern		
97% illustration	91% design	85% artistic	78% dirty		
94% paper	90% symbol	84% abstract	77% graphic		
moderation:	99% safe	0% suggestive	0% explicit	0% gore	0% drug

Tarsila do Amaral
Estrada de Ferro Central do Brasil
1924



text: DXXX XIXIX



visually similar



Google Cloud Vision

best guess: tarsila do amaral railroad

violence:
very unlikely

medical:
very unlikely

adult:
very unlikely

spoof:
unlikely

racy:
very unlikely

labels: 85% modern art
79% art
73% painting

68% visual arts
66% illustration
65% architecture

text: dxxx xixix

Microsoft Azure

category:
outdoor

is adult content? False 0% adult

is racy content? False 1% racy

labels:
cartoon
building
text
window
screenshot

illustration
design
graphic
drawing
art
child art

painting

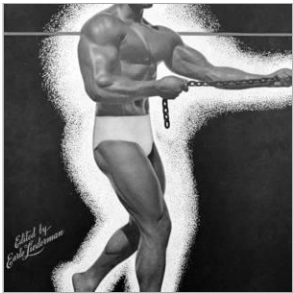
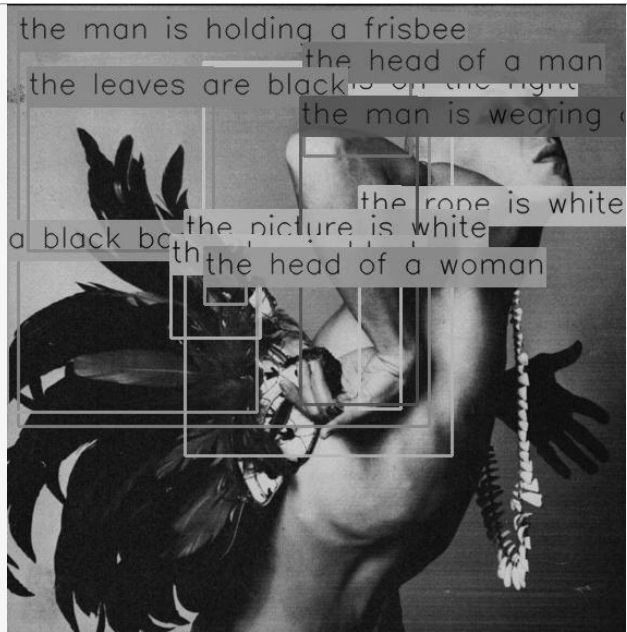
Francisco Copello

Calendário

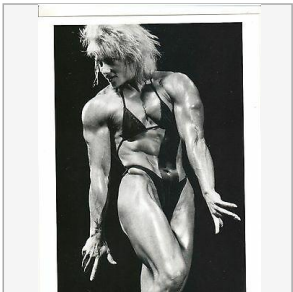
1974



Why cephalopod (squid) ink, horse, sketch and painting? Different genres and multiple ethnicities were read.



visually similar



Microsoft Azure

category:
others

is adult content? False 23% adult
is racy content? False 29% racy

labels:

horse
drawing
woman
sketch
person

painting
girl
cartoon
holding
black and white
black

text
young
art
standing
human face
man

beautiful
pair
posing
white
wearing
riding

ClarifAI

safe for work? 48% nsfw

labels:

99% people
99% art
98% nude
97% adult

97% tattoo
94% portrait
93% man
92% painting
89% illustration

81% woman
77% squid ink
33% hispanic
33% latino
33% spanish

32% white
26% black
7% alaska native
5% asian
2% mid. eastern

moderation: 52% safe 44% suggestive 2% explicit 0% gore 0% drug

Diego Barboza

Acontecimiento Arte como Gente / Gente como Arte

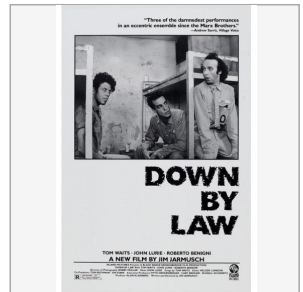
1976



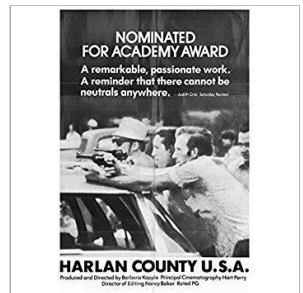
Artwork read as "paper product" + "ads", and the description says "mammal".

#06 a vintage photo of a person

76%



visually similar



Amazon Rekognition

labels:

99% poster
99% advertisement
99% person
99% human
98% text

92% newspaper
84% mammal
84% horse
84% animal
82% page
69% paper
67% flyer

67% brochure
60% face
60% art

Google Cloud Vision

best guess: poster

violence:
very unlikely

medical:
very unlikely

adult:
very unlikely

spoof:
unlikely

racy:
very unlikely

labels:
93% text
68% font
67% history

62% photography
56% paper
50% illustration

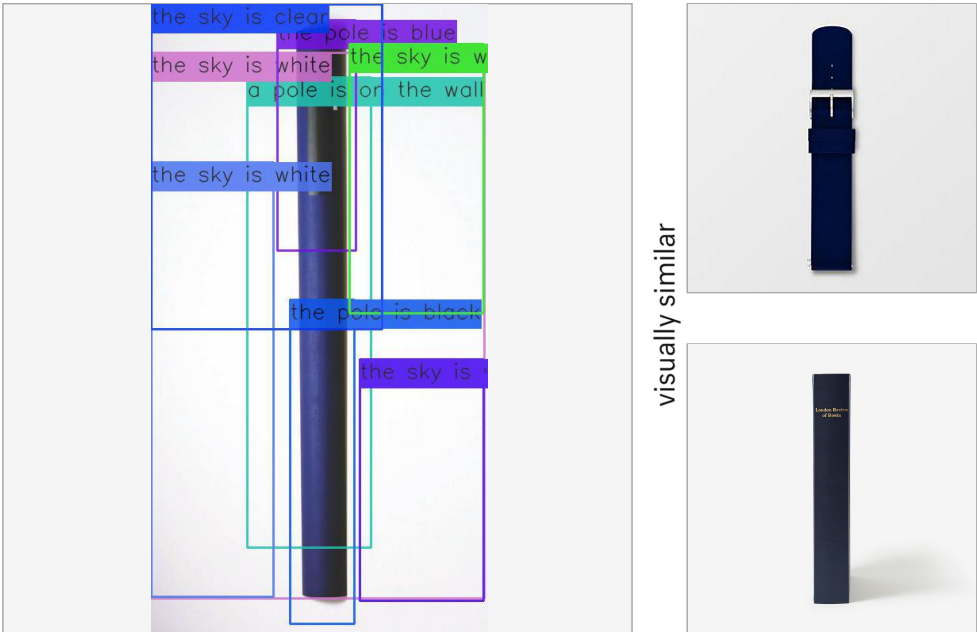
50% paper product

text: acontecimientos de arte como gente gente como arte arte como gente gen...

Antônio Lizárraga
Perpendicular nº 35
1991



Even a pole can be a pen. Read as material property and the sky is white.



Google Cloud Vision

best guess: can't make a guess

violence: very unlikely	medical: very unlikely	adult: very unlikely	spoof: very unlikely	racy: very unlikely
----------------------------	---------------------------	-------------------------	-------------------------	------------------------

69%

 material property

54%

 office supplies

labels:

66%

 pen

63%

 cylinder

text: no texts found

Microsoft Azure

category: others

is adult content? False

0%

 adult

is racy content? False

0%

 racy

labels:	black	blue
office supplies	minimalist	purple
thing	white	room
pen	table	standing
sitting	large	game
text	pole	street

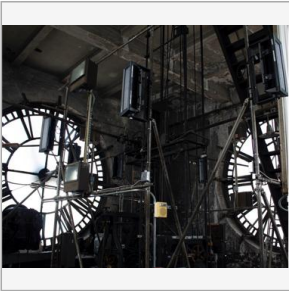
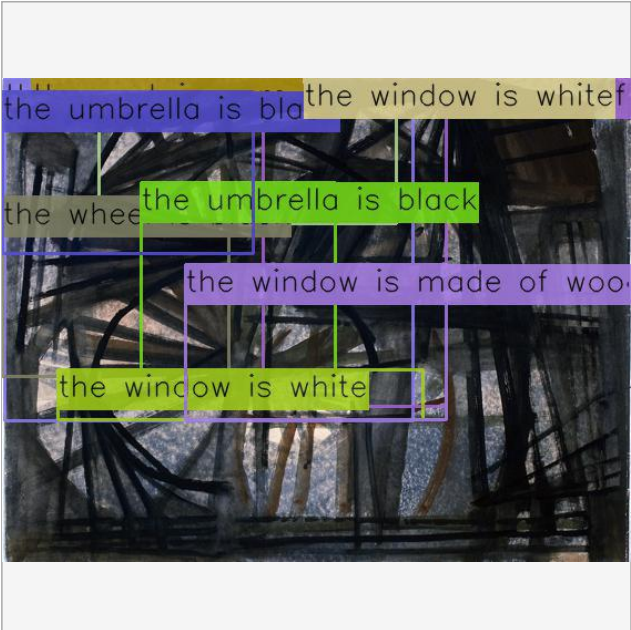
Americo Sposito

Pintura

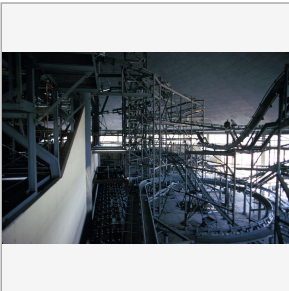
1954



The sentences are poetic.



visually similar



Microsoft Azure

category: outdoor

is adult content? False 2% adult

is racy content? False 2% racy

labels:	bicycle	man	enclosure
building	sitting	large	white
train	standing	water	woman
bridge	track	room	river
wooden	old	riding	parked
table	clock	people	group

ClarifAI

safe for work? 1% nsfw

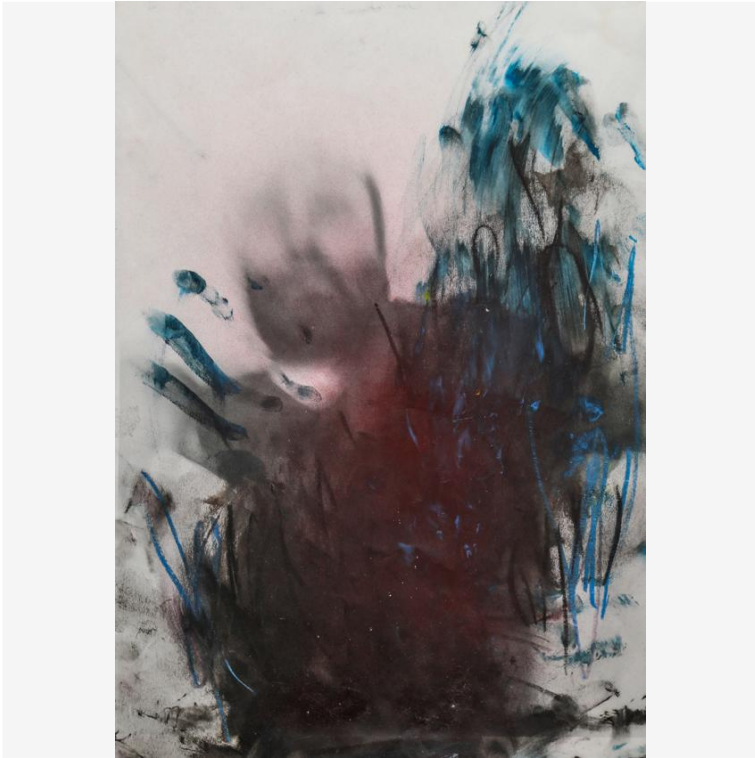
labels:	94% bridge	91% water	87% light
98% art	94% abandoned	89% design	85% window
97% architecture	94% abstract	88% construction	84% decay
95% no person	93% artistic	87% shape	84% building
94% reflection	92% old	87% color	83% picture frame

moderation: 99% safe 0% suggestive 0% explicit 0% gore 0% drug

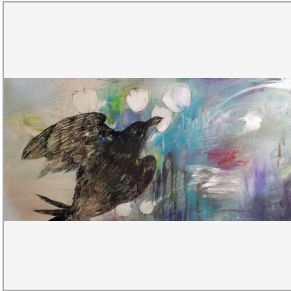
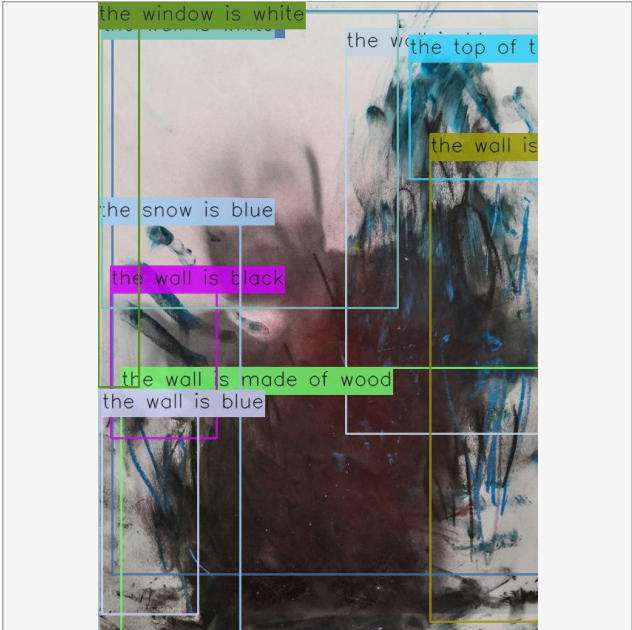
Rodrigo Linhares

#11 Taurus

2016



Presumptive definitions. Read as sitting, bird and cake. 99% child art.



visually similar



Microsoft Azure

category:
others

is adult content? False 0% adult

is racy content? False 1% racy

labels:	covered	waterfall
painting	art	plant
sitting	water	white
drawing	sketch	cake
snow	rain	bird
child art	abstract	group

Google Cloud Vision

best guess: painting

violence:
possible

medical:
unlikely

adult:
very unlikely

spoof:
very unlikely

racy:
very unlikely

labels:	92% painting	82% visual arts	74% drawing
	91% blue	82% art	72% acrylic paint
	85% watercolor paint	80% modern art	69% illustration

text: no texts found

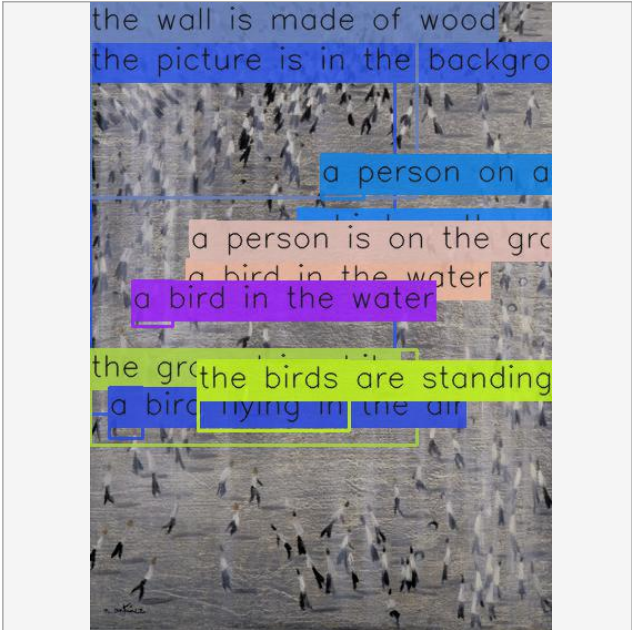
Nemesio Antúnez

Os Transeuntes

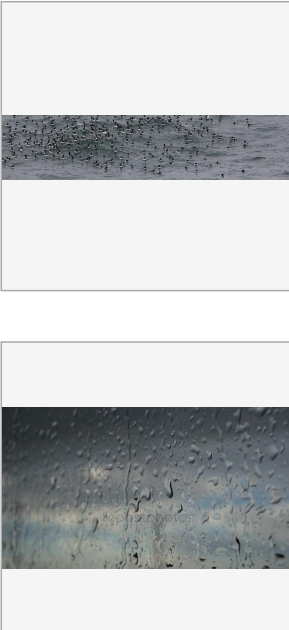
1954



Birds or people or something else?



visually similar



Google Cloud Vision

best guess: seabird

violence: very unlikely medical: very unlikely adult: very unlikely spoof: very unlikely racy: very unlikely

labels: **83%** bird migration **68%** seabird
82% flock **68%** animal migration
73% bird **64%** shorebird

text: no texts found

Microsoft Azure

category:
abstract texture

is adult content? False **0%** adult
is racy content? False **0%** racy

labels:	animal	many	full
bird	group	stone	walking
flock	large	lot	perched
outdoor	standing	several	beach
ground	bunch	herd	grazing
water	feeding	cow	flying

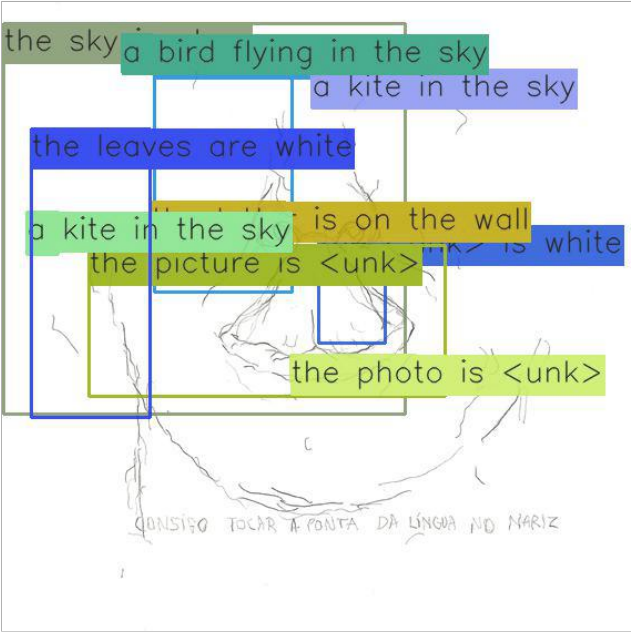
Junior Suci

No title

2010



Why man? Every sketch is art when done by a child.



visually similar



ClarifAI

safe for work? 7% nsfw

labels:	98% chalk out	95% vector	90% clip
99% art	97% character	93% line	90% cute
99% sketch	97% retro	93% man	87% old
99% illustration	96% funny	91% design	85% cheerful
98% scribble	96% visuals	91% crazy	84% far-out

moderation: 99% safe 0% suggestive 0% explicit 0% gore 0% drug

Microsoft Azure

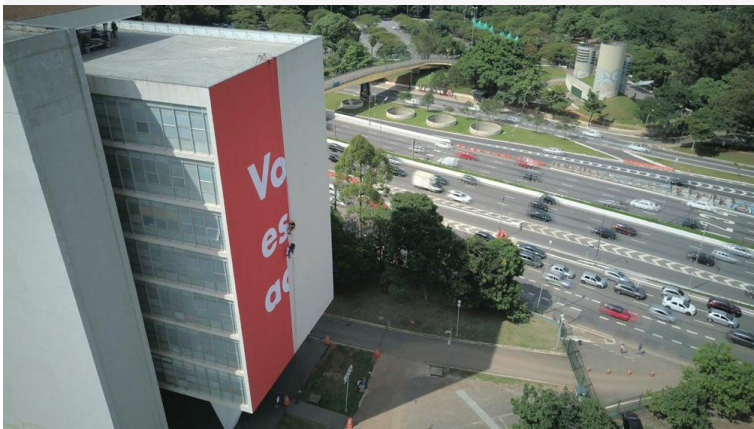
category:
abstract nonphoto

is adult content? False 16% adult
is racy content? False 25% racy

labels:
sketch
drawing
child art
cartoon
illustration

art
linedrawing

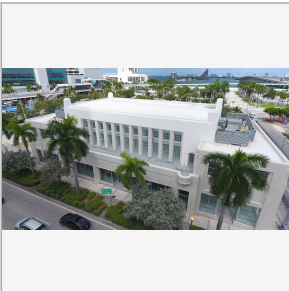
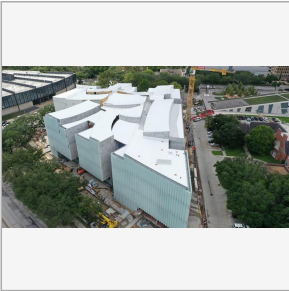
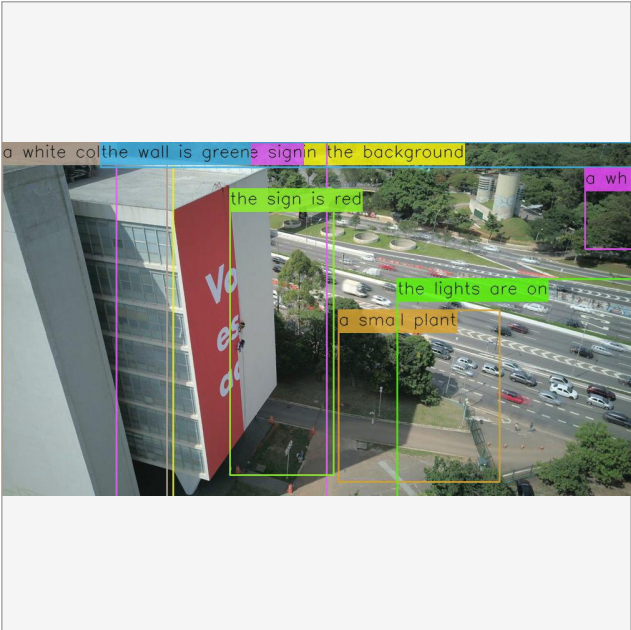
Tadeu Jungle
Você Está Aqui
2016



Read as thoroughfare and commercial.

#12 a sign on the side of a building

67%



visually similar

Amazon Rekognition

labels:

- 99% road
- 96% outdoors
- 96% nature
- 96% scenery
- 95% landscape

- 93% automobile
- 93% car
- 93% transportation
- 93% vehicle
- 90% intersection
- 89% freeway
- 78% aerial view

- 66% urban
- 59% building
- 58% highway

Google Cloud Vision

best guess: metropolitan area

violence: very unlikely medical: very unlikely adult: very unlikely spoof: very unlikely racy: very unlikely

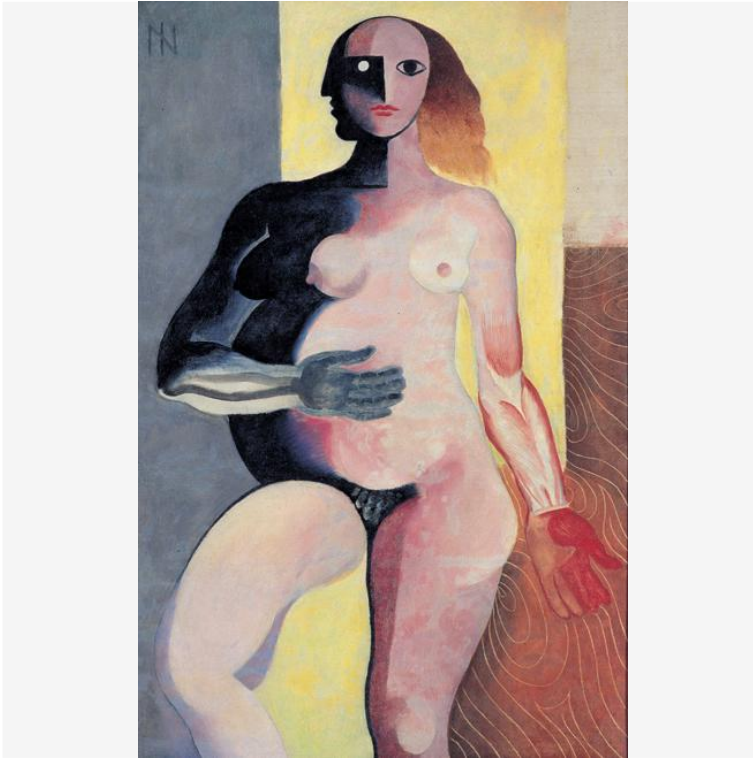
- 82% metropolitan area
- 78% urban area
- 74% urban design
- 65% architecture
- 57% thoroughfare
- 56% city
- 53% building

text: no texts found

Ismael Nery

Figura

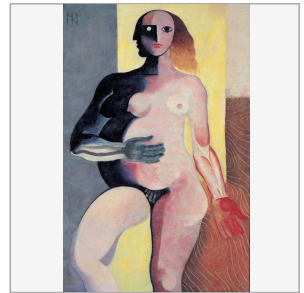
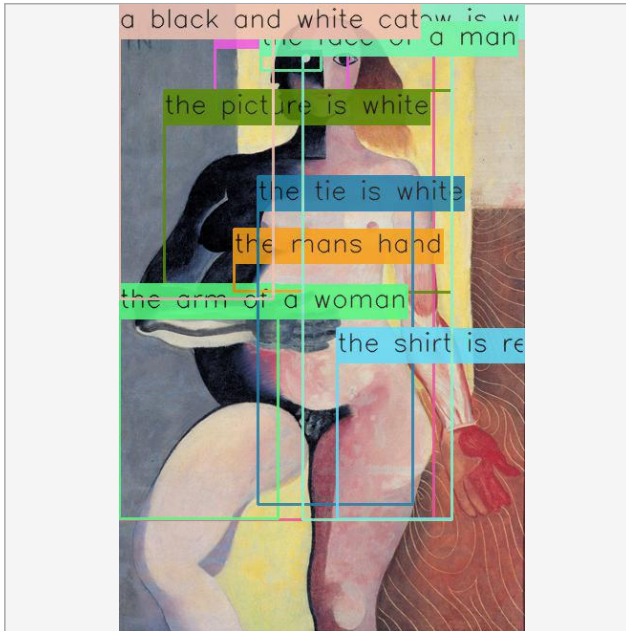
1927-1928



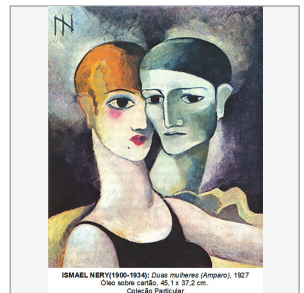
Why 50% "white"? Why style? Read as flesh and retro. Interesting how does the neural network captures subjectivity in society. The flesh of the only child in the womb.

#13 a tattoo on his face

65%



visually similar



Google Cloud Vision

best guess: ismael nery figura 1927

violence: very unlikely medical: very unlikely adult: likely spoof: very unlikely racy: very likely

labels:
 94% painting 81% acrylic paint 65% illustration
 87% art 79% watercolor paint 57% flesh
 83% modern art 69% visual arts 56% art model

text: no texts found

ClarifAI

safe for work? 4% nsfw

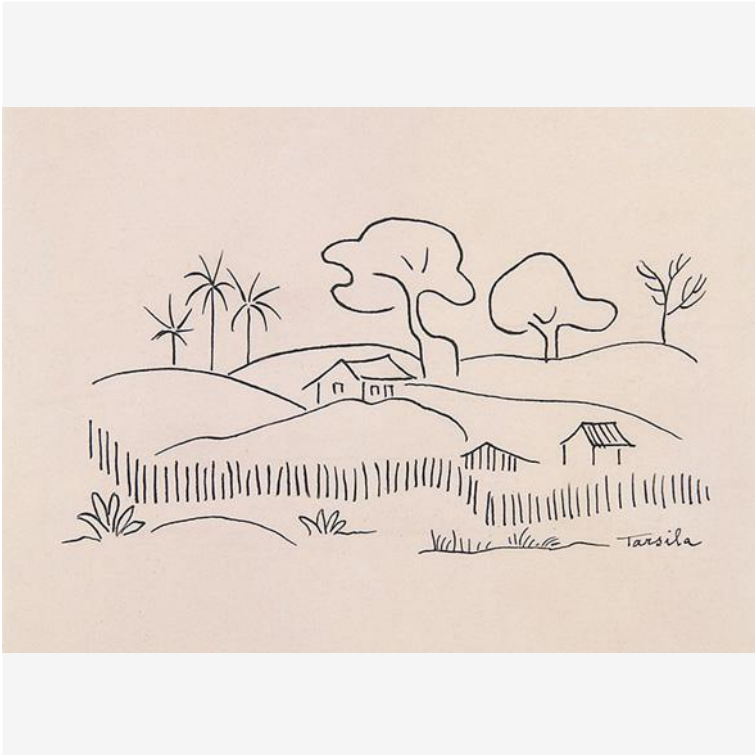
labels:
 99% painting 98% artistic 94% face 91% hair
 99% art 97% nude 93% portrait 90% retro
 99% illustration 95% girl 93% style 90% fashion
 98% woman 95% color 92% man 89% visuals
 95% people 91% adult 89% one

moderation: 0% safe 0% suggestive 99% explicit 0% gore 0% drug

Tarsila do Amaral

Paisagem Rural

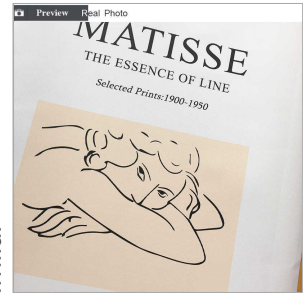
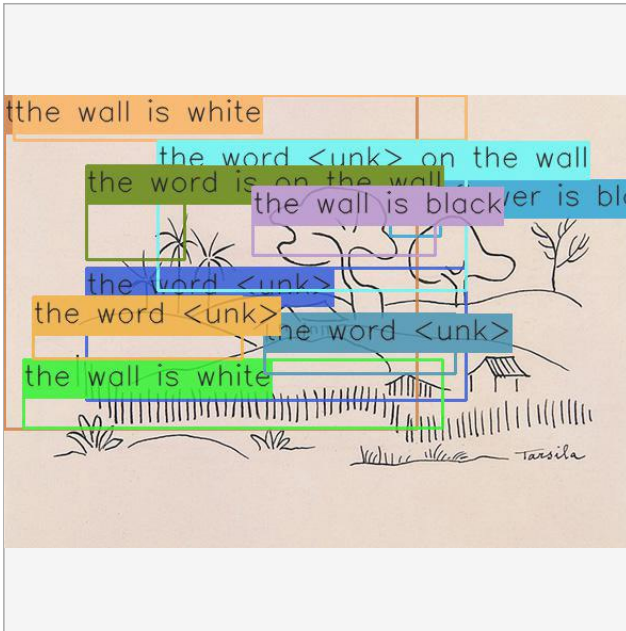
1924



text: bn Man and the lilllllll Jeduce were Tarsila

#14 a close up of text on a whiteboard

71%



visually similar



Google Cloud Vision

best guess: cartoon

violence:
very unlikely

medical:
very unlikely

adult:
very unlikely

spoof:
very unlikely

racy:
very unlikely

labels: **78%** drawing
74% line art
71% organism

64% plant
62% coloring book
62% illustration

61% sketch
54% fish
50% art

text: bn man and the lllllll jeduce were tarsila

Microsoft Azure

category:
abstract nonphoto

is adult content? False **10%** adult

is racy content? False **11%** racy

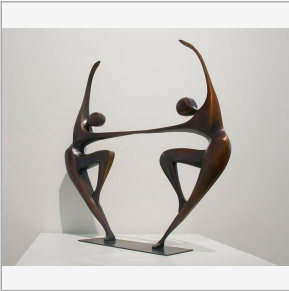
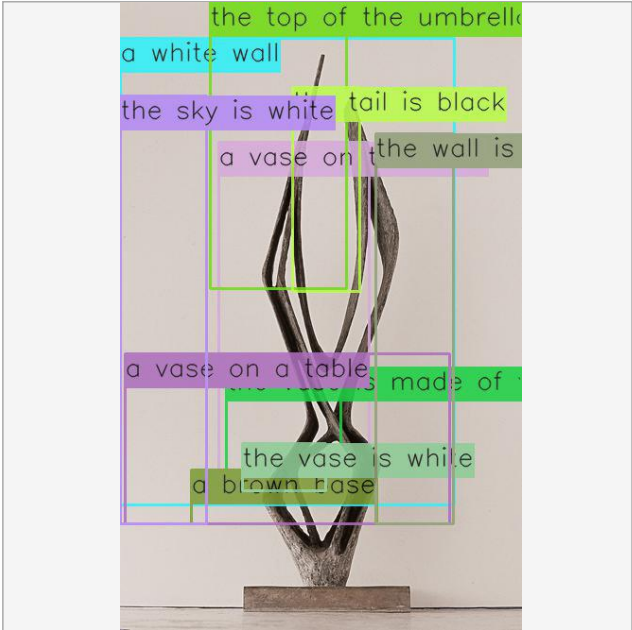
labels:
drawing
text
sketch
whiteboard
cartoon

illustration
child art

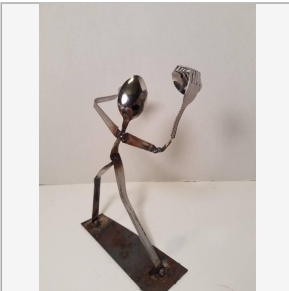
Barbara Hepworth
Cantante Domino
1958



Read as weaponry or text. But also abstract shape.



visually similar



Amazon Rekognition

labels:

- 81%

text
- 79%

art
- 73%

sculpture
- 64%

glasses
- 64%

accessories
- 64%

accessory
- 61%

glass
- 58%

coat rack
- 58%

symbol
- 57%

weaponry
- 57%

weapon

Microsoft Azure

category:
abstract shape

is adult content? False 3% adult
is racy content? False 4% racy

- labels:

sketch

thing

drawing

sitting

abstract

bird

minimalist

wooden

art

table

design

black

white

pair

water

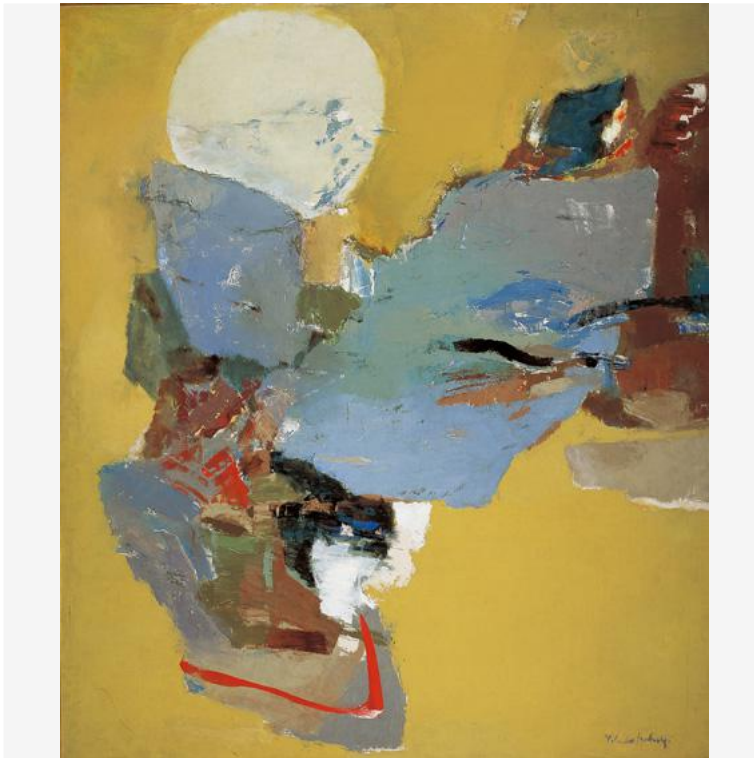
standing

bench

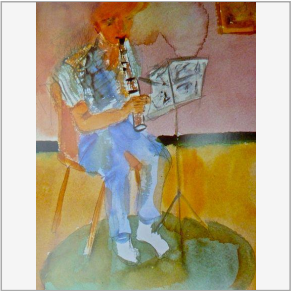
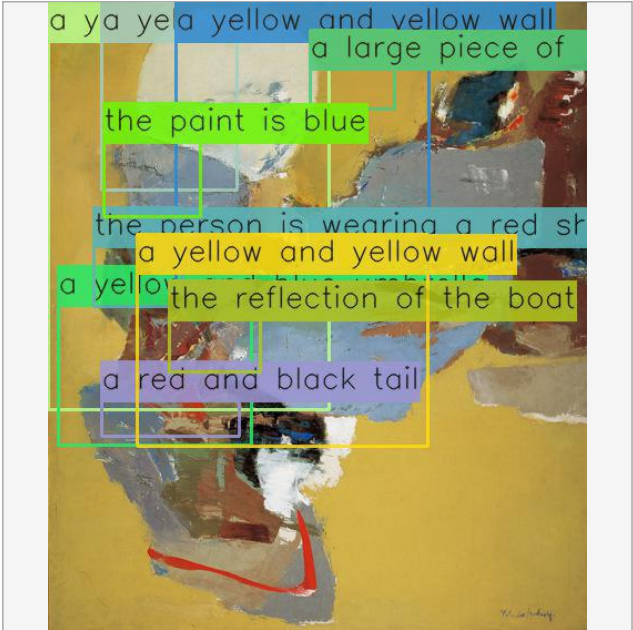
vase

cat

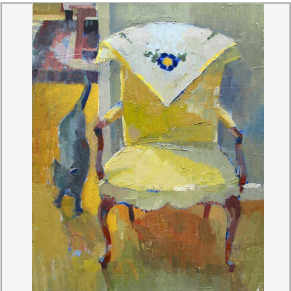
Yolanda Mohalyi
A Grande Viagem
1969



Modern art and artistic. Labelled as "child art" and "sfw".



visually similar



Amazon Rekognition

labels:

97%

 art

97%

 modern art

97%

 painting

66%

 paint container

61%

 canvas

ClarifAI

safe for work?

12%

 nsfw

labels:

99%

 painting

99%

 artistic

99%

 art

99%

 creativity

99%

 paintbrush

99%

 brush

99%

 dirty

99%

 messy

98%

 wall

98%

 acrylic

98%

 graffiti

98%

 canvas

98%

 painter

97%

 gouache

95%

 palette

94%

 stain

94%

 retro

94%

 motley

93%

 abstract

moderation:

99%

 safe

0%

 suggestive

0%

 explicit

0%

 gore

0%

 drug

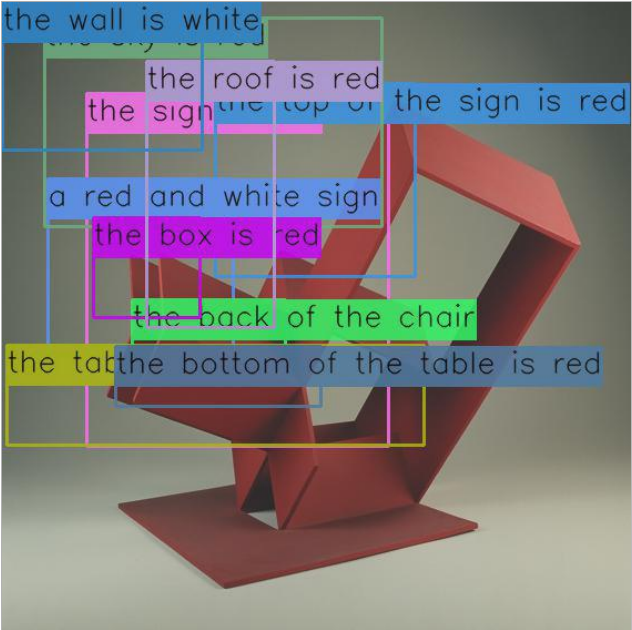
Eduardo Ramirez Villamizar

Construção Vermelha

1969



Als compared it to chairs or origami.



visually similar

Google Cloud Vision

best guess: shelf

violence: very unlikely	medical: very unlikely	adult: very unlikely	spoof: very unlikely	racy: very unlikely
<div>75%</div> design		<div>68%</div> art paper		<div>62%</div> origami paper
labels: <div>70%</div> paper		<div>65%</div> art		<div>55%</div> paper product
<div>68%</div> font		<div>63%</div> origami		<div>53%</div> furniture

text: no texts found

Microsoft Azure

category: others

is adult content? False

0%

 adult

is racy content? False

0%

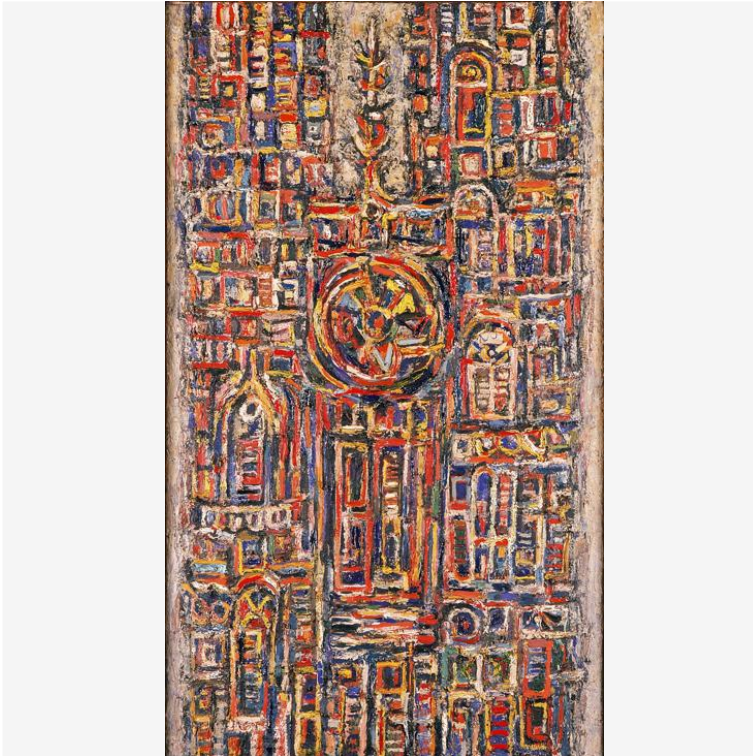
 racy

labels:	sitting	geometric
design	geometry	sign
red	airplane	construction paper
origami	art paper	standing
table	large	aircraft
origami paper	wooden	

René Portocarrero

Catedral

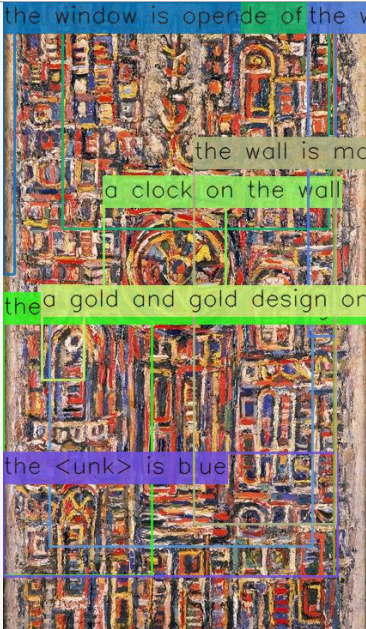
1961



Labelled as text, tapestry and rug.

#18 a painting on the wall

61%



visually similar

Google Cloud Vision

best guess: painting

violence:
very unlikely

medical:
very unlikely

adult:
very unlikely

spoof:
very unlikely

racy:
very unlikely

labels: **88%** art
79% textile
69% tapestry

67% modern art
66% visual arts
55% painting

53% miniature
50% collection

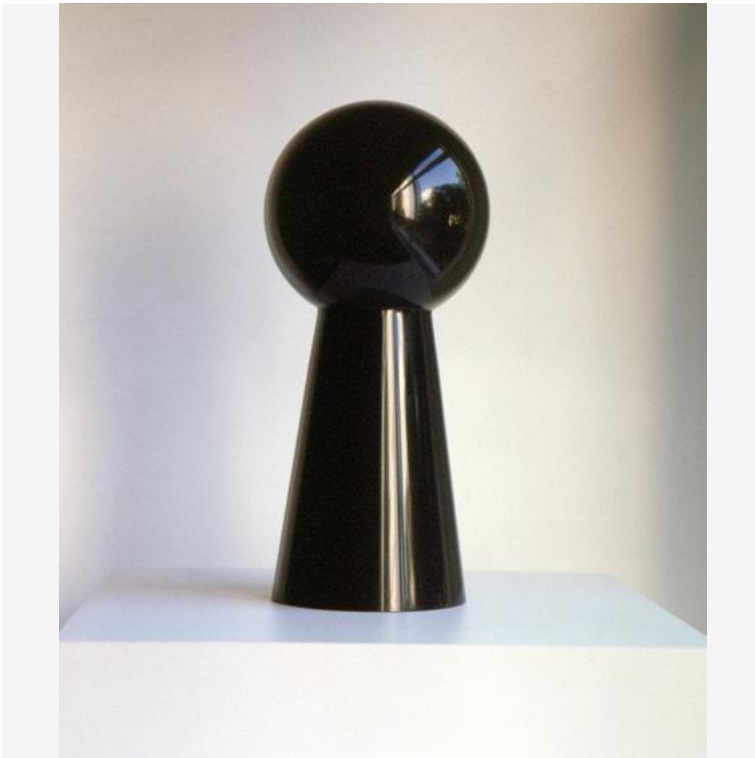
text: eee

Amazon Rekognition

labels:

93% art
89% ornament
89% tapestry
88% rug
84% painting

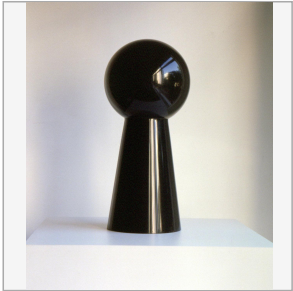
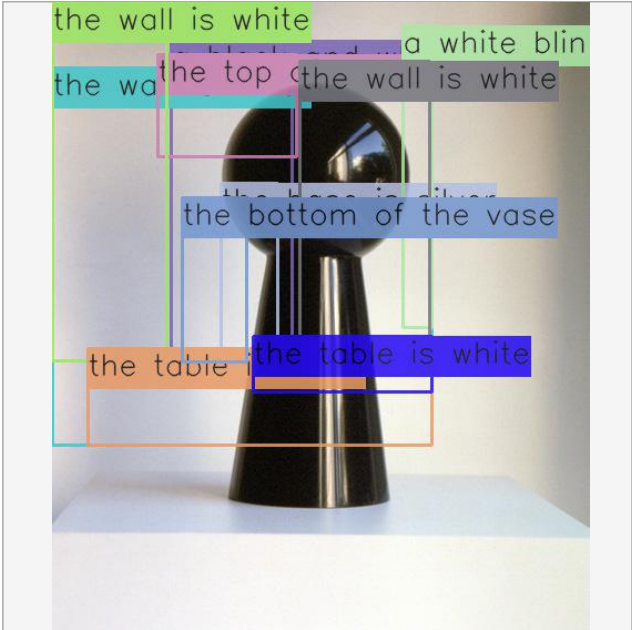
Iran do Espírito Santo
Buraco de fechadura
2002



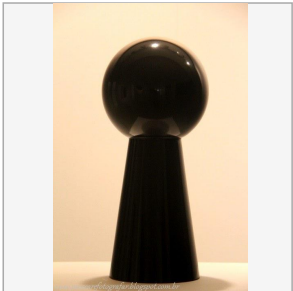
Labelled as "material property" and trophy.

#19 a vase sitting on a table

30%



visually similar



Google Cloud Vision

best guess: iran do espirito santo

violence:
very unlikely

medical:
very unlikely

adult:
very unlikely

spoof:
very unlikely

racy:
very unlikely

labels: 69% material property
62% photography
51% metal

text: no texts found

Amazon Rekognition

labels:

81% sphere
72% trophy
63% figurine

José Roberto Aquilar

Série do Futebol (1)

1966



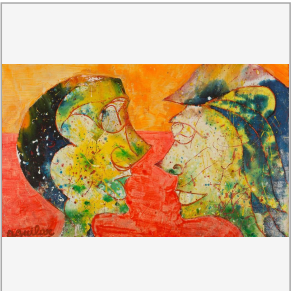
text: || |



visually similar



Futbol n°1, José Roberto Aguilar



Google Cloud Vision

best guess: obra de arte josé roberto aguilar time

violence: very unlikely medical: very unlikely adult: very unlikely spoof: very unlikely racy: unlikely

text: |||

Microsoft Azure

category:
abstract texture

is adult content? False 0% adult
is racy content? False 0% racy

labels:
child art
thing
painting
birthday
drawing

object
cake
candle
colorful
abstract
table

art
many
woman
bright
standing
colored

COLLABORATORS

Amanda Jurno

Bernardo Fontes

Dalida María Benfield

K. Ye

Marcus Abreu

Paloma Ferreira Victor

Rafael Tsuha

Sabelo Mhlambi

André Akio Yamauchi Reyes

Bruno Moreschi

Gabriel Pereira

Lucas Nunes Sequeira

Natalia Manzoni

Pedro Henrique dos Santos Pereira

Rodrigo

Victor Moreira

