



UEPB

Universidade Estadual da Paraíba
Programa de Pós-Graduação em Desenvolvimento Regional

Bacia Hidrográfica do Rio Paraíba

Prof. Dr. Rafael Albuquerque Xavier



Bacias hidrográficas do Estado da Paraíba

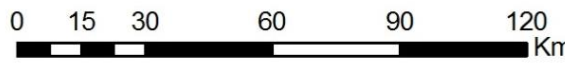


Legenda

Bacias Hidrográficas

Abiaí	Mamanguape
Camaratuba	Miriri
Curimataú	Paraíba
Gramame	Piranhas
Guaju	Trairi
Jacu	

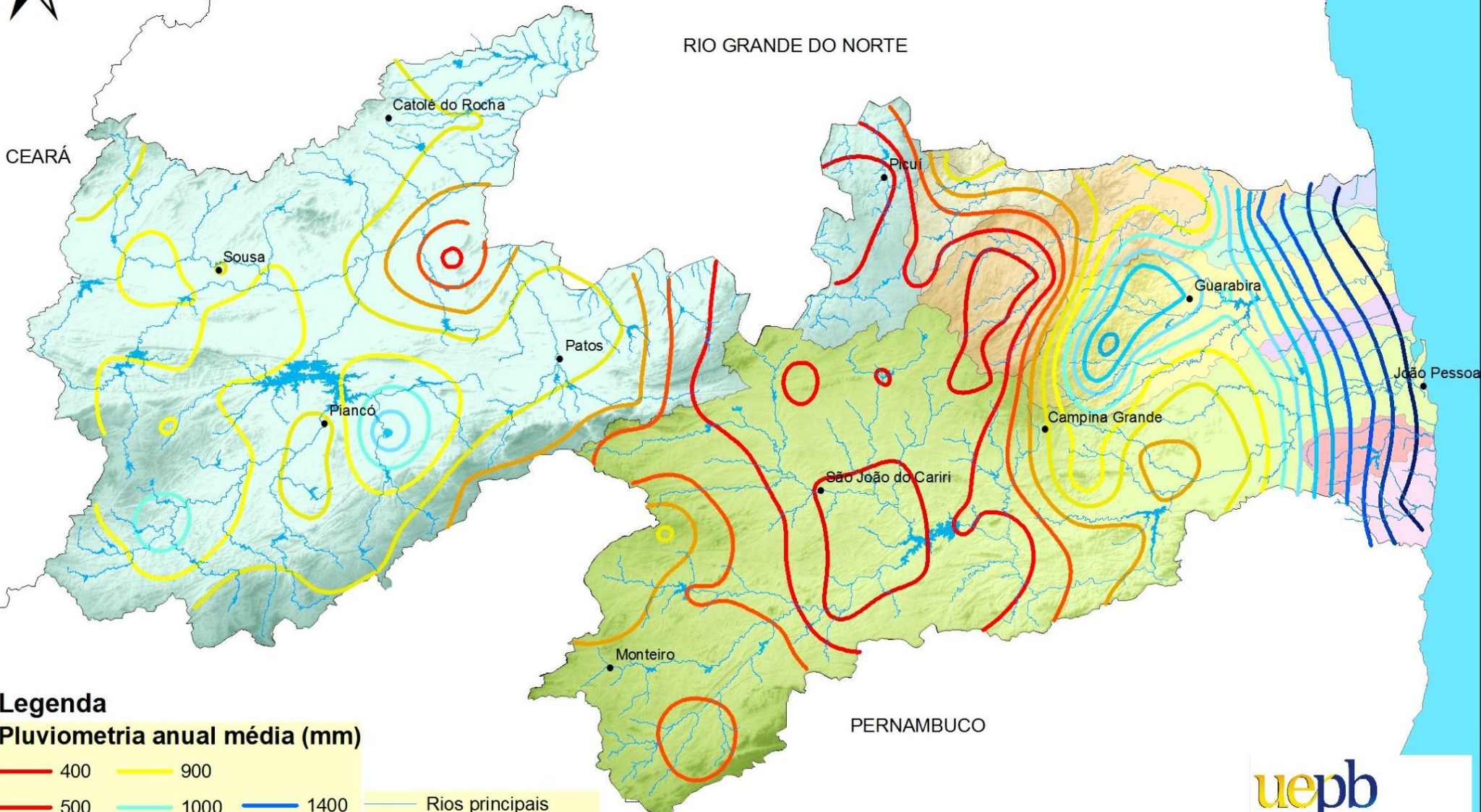
Rios principais
 Açudagem principal
 Bacias Hidrográficas
 mar



CENTRO DE EDUCAÇÃO
DEPARTAMENTO DE GEOGRAFIA
PROF. DR. RAFAELA. XAVIER



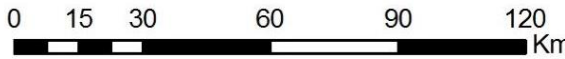
Bacias hidrográficas e Isoetas do Estado da Paraíba



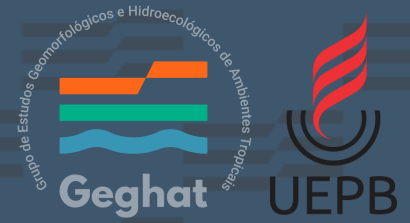
Legenda Pluviometria anual média (mm)

- | | |
|--------|--------|
| — 400 | — 900 |
| — 500 | — 1000 |
| — 600 | — 1100 |
| — 700 | — 1200 |
| — 800 | — 1300 |
| — 1400 | — 1500 |
| — 1600 | — 1700 |

- | |
|------------------------|
| — Rios principais |
| — Açudagem principal |
| — Bacias Hidrográficas |
| — mar |



CENTRO DE EDUCAÇÃO
DEPARTAMENTO DE GEOGRAFIA
PROF. DR. RAFAELA. XAVIER

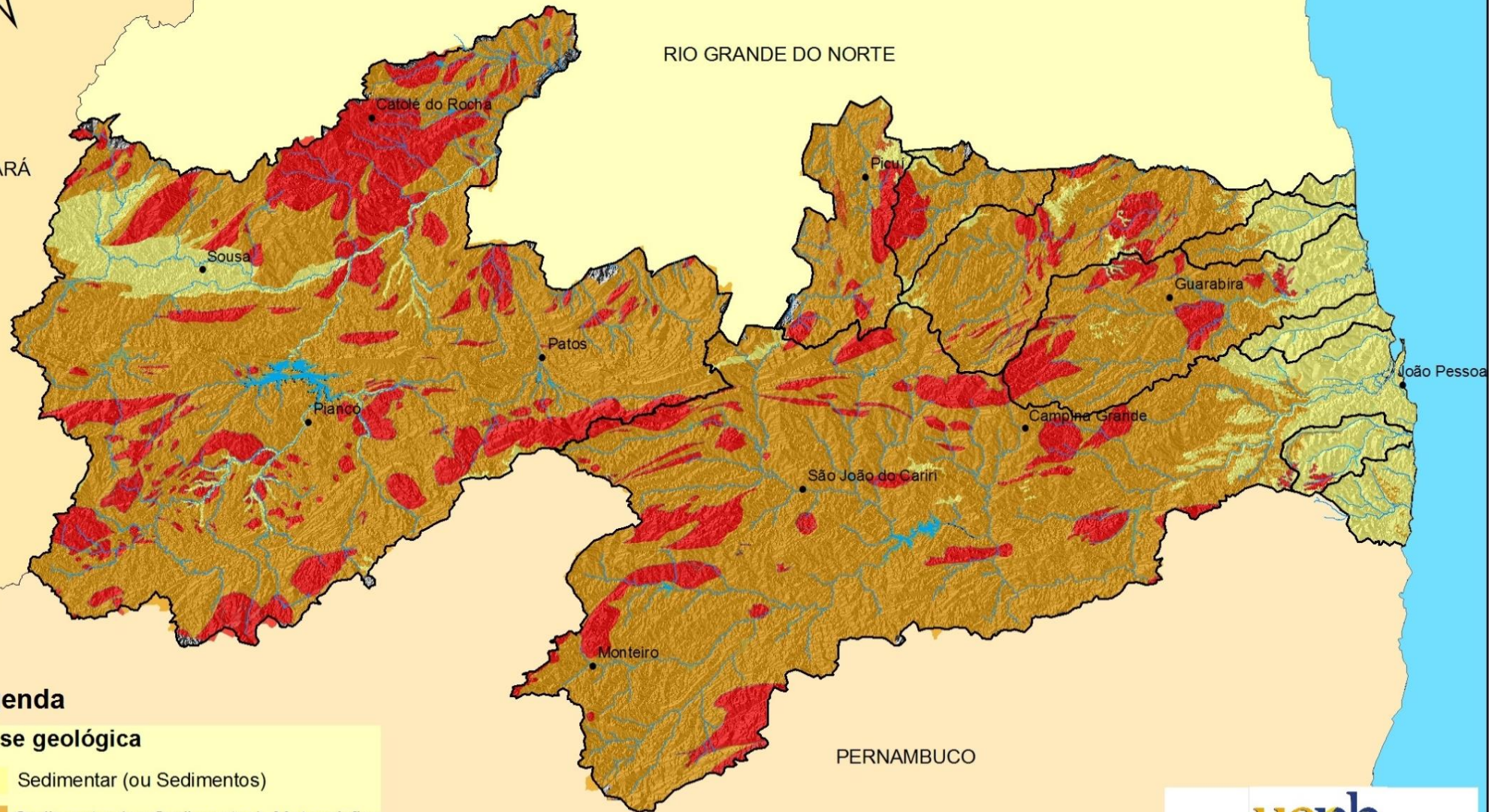


Classes geológicas e bacias hidrográficas do Estado da Paraíba



CEARÁ

RIO GRANDE DO NORTE



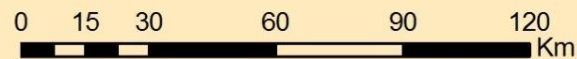
PERNAMBUCO

Legenda

Classe geológica

- Sedimentar (ou Sedimentos)
- Sedimentar (ou Sedimentos), Metamórfica
- Metamórfica
- Ígnea, Metamórfica
- Ígnea

- Rios principais
- Açudagem principal
- Bacias Hidrográficas
- mar



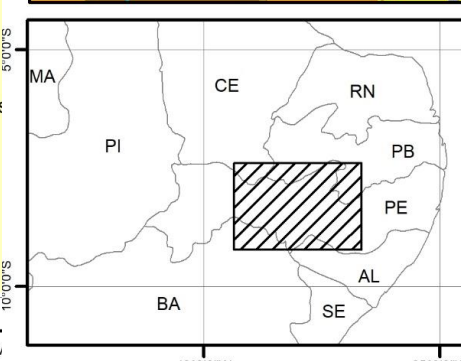
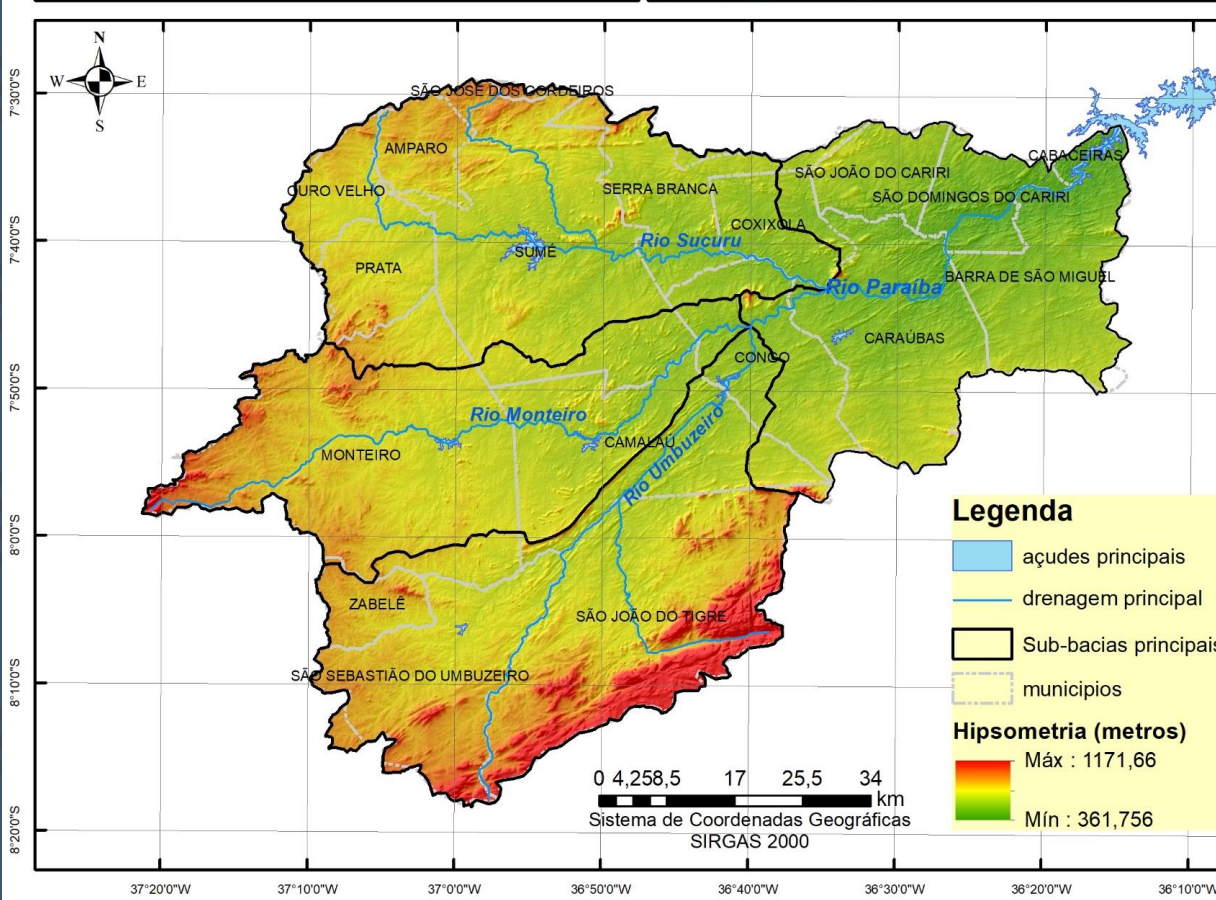
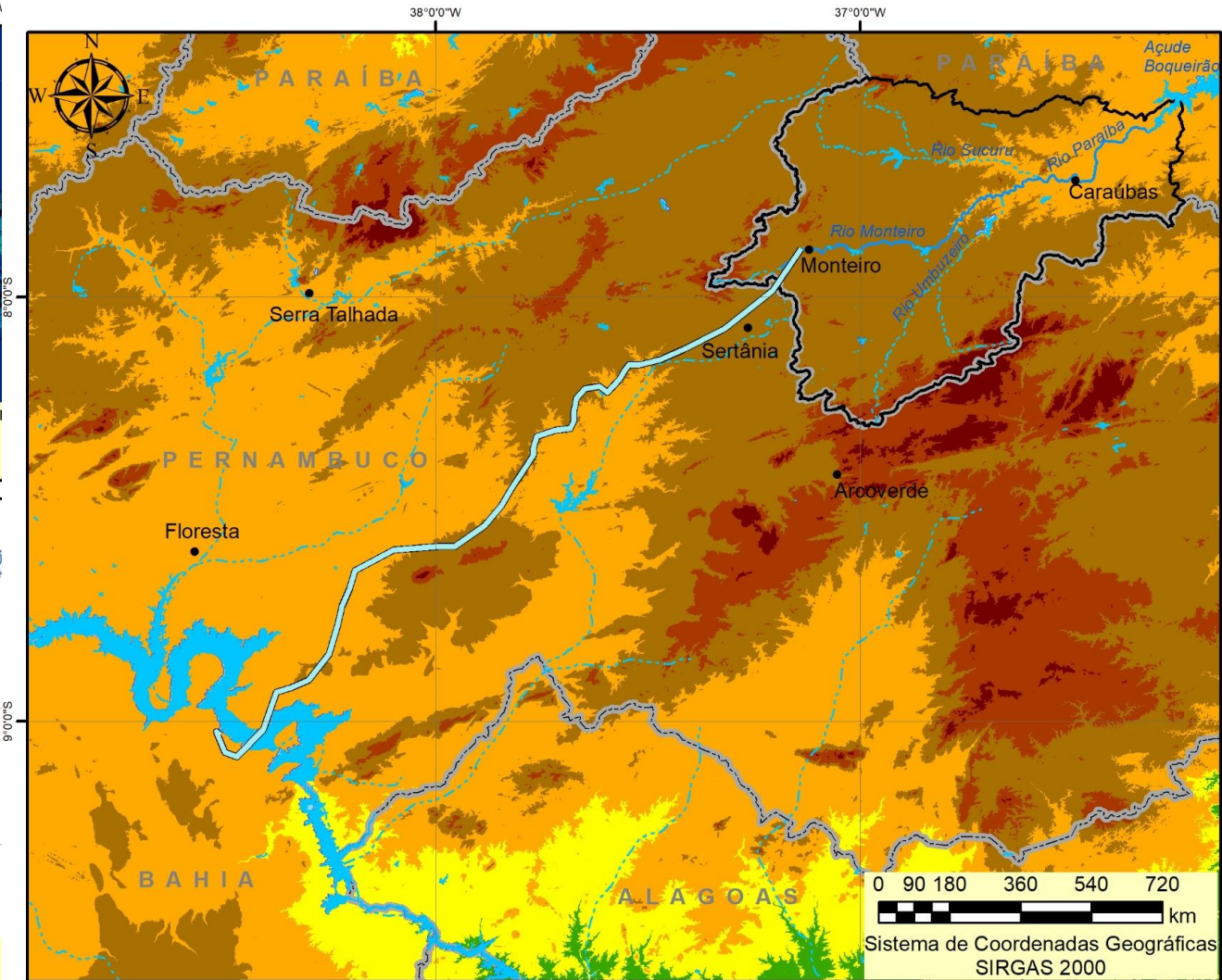
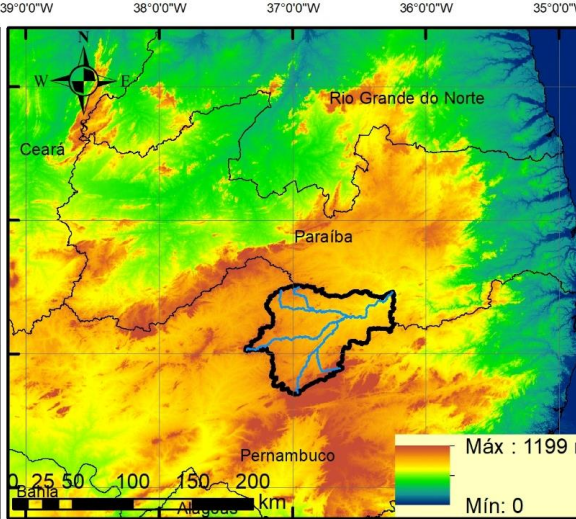
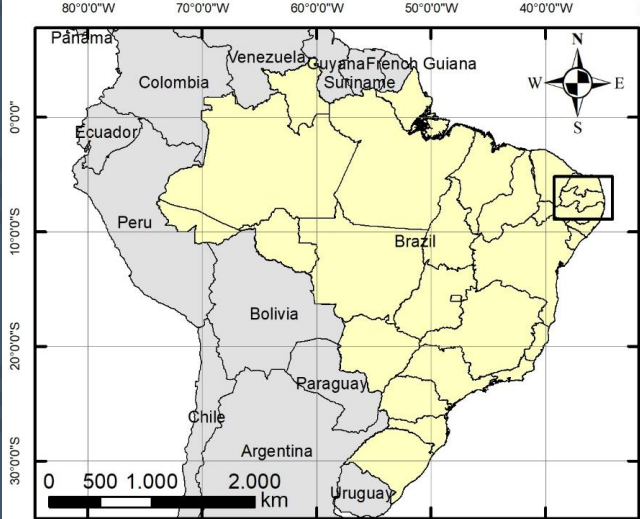
uepb
Universidade
ESTADUAL DA PARAÍBA

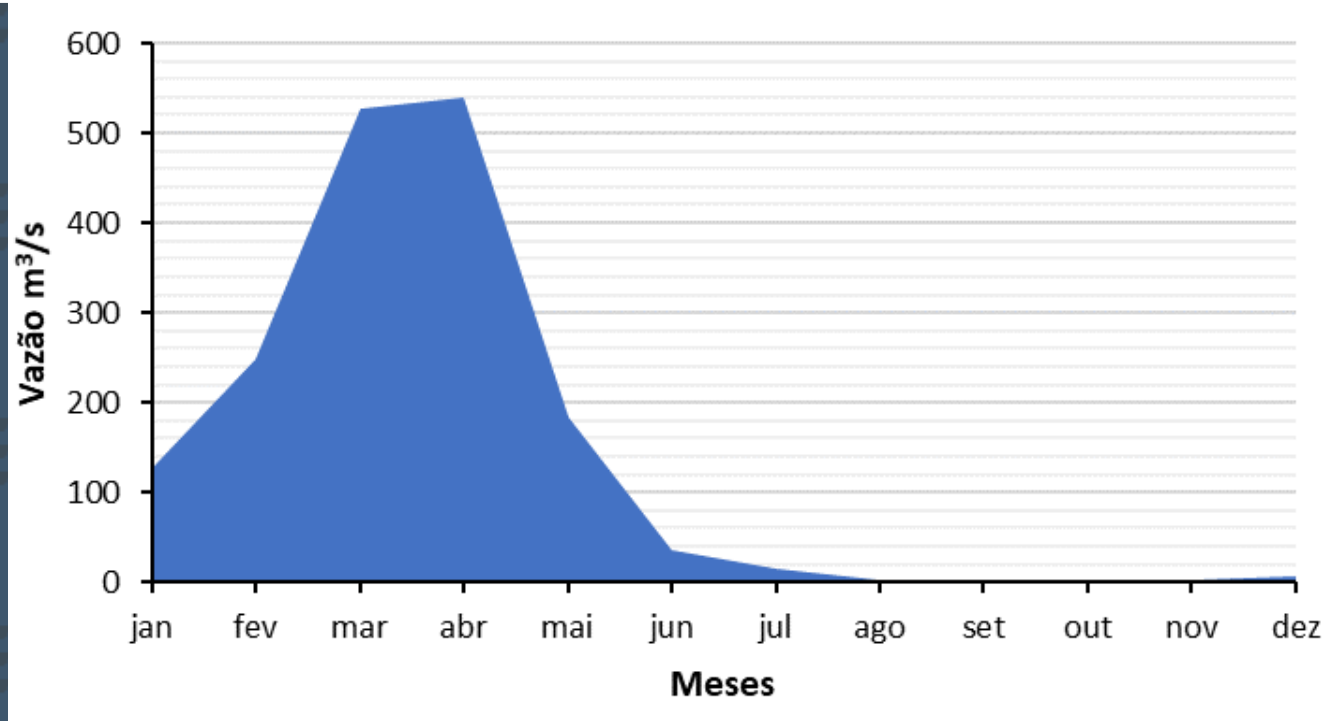
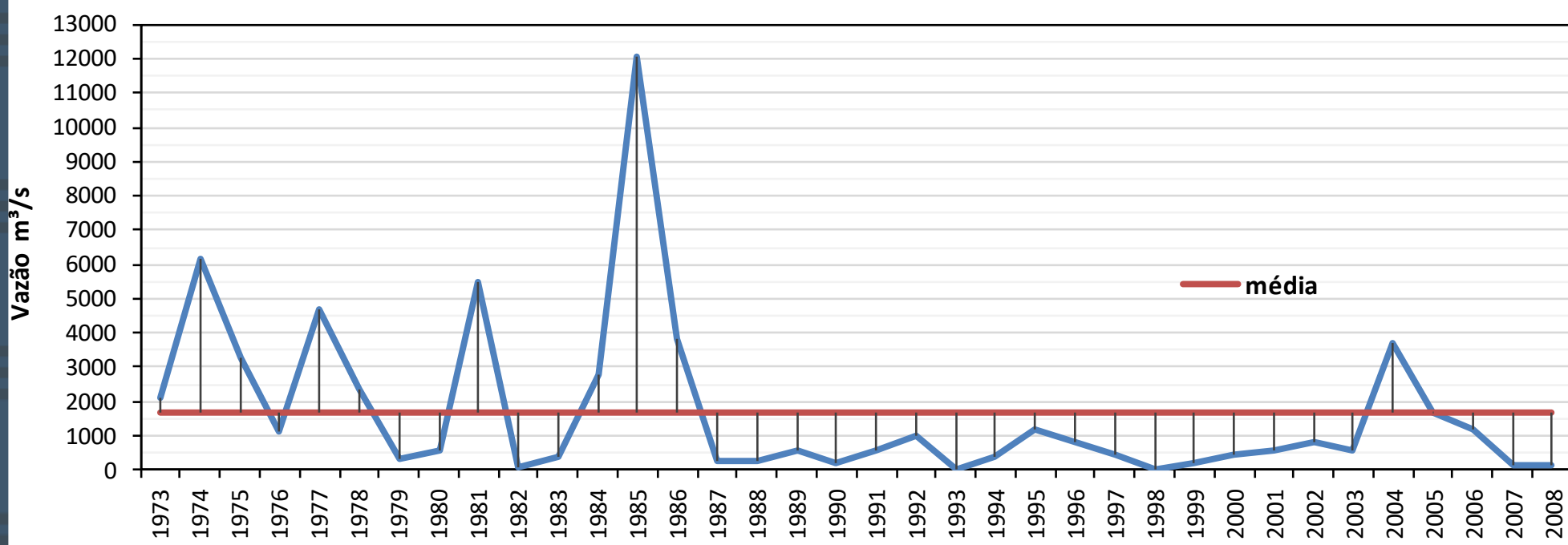
CENTRO DE EDUCAÇÃO
DEPARTAMENTO DE GEOGRAFIA
PROF. DR. RAFAELA. XAVIER

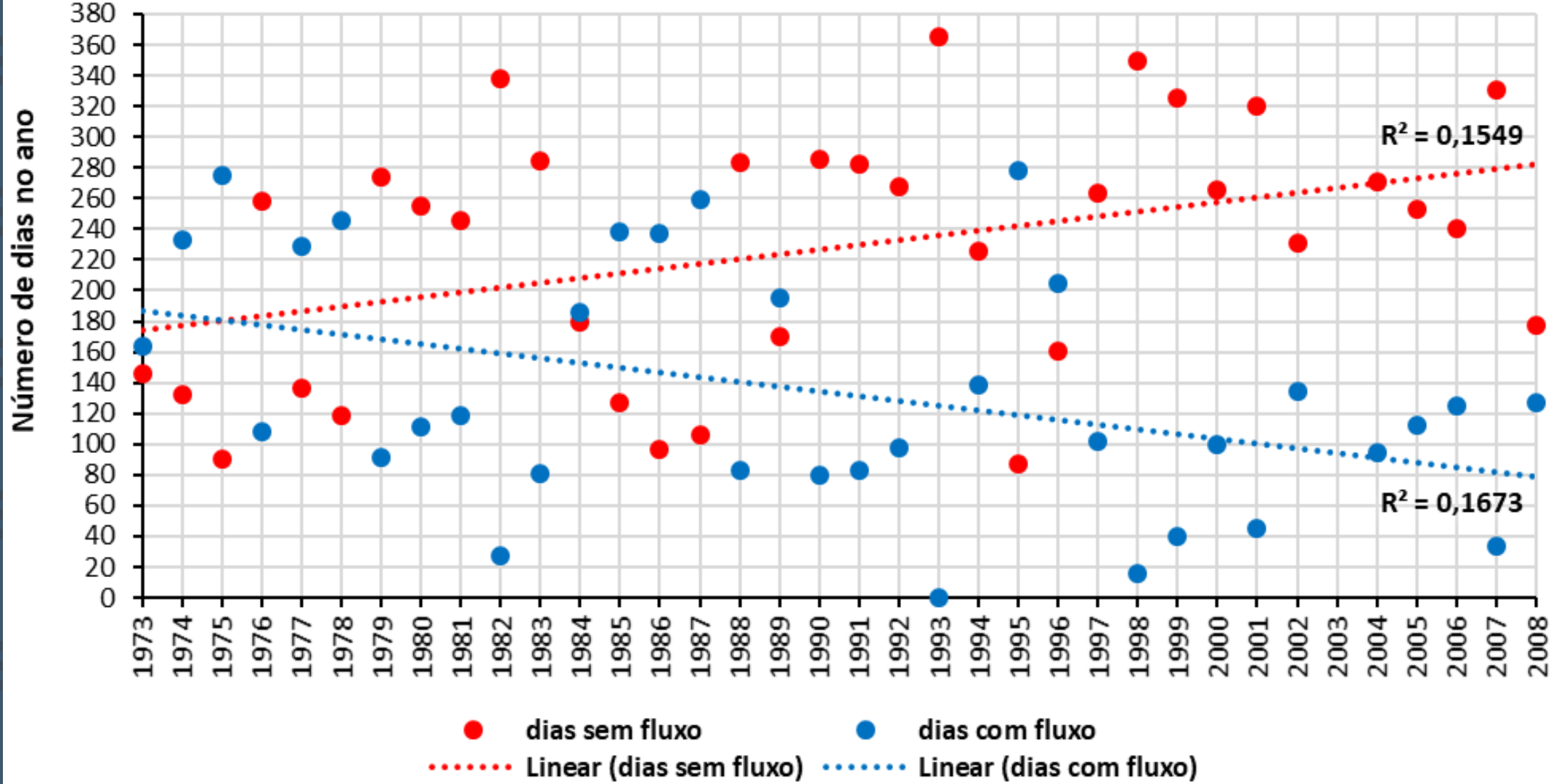
Grupo de Estudos Geomorfológicos e Hidroecológicos de Ambientes Tropicais

Geghat

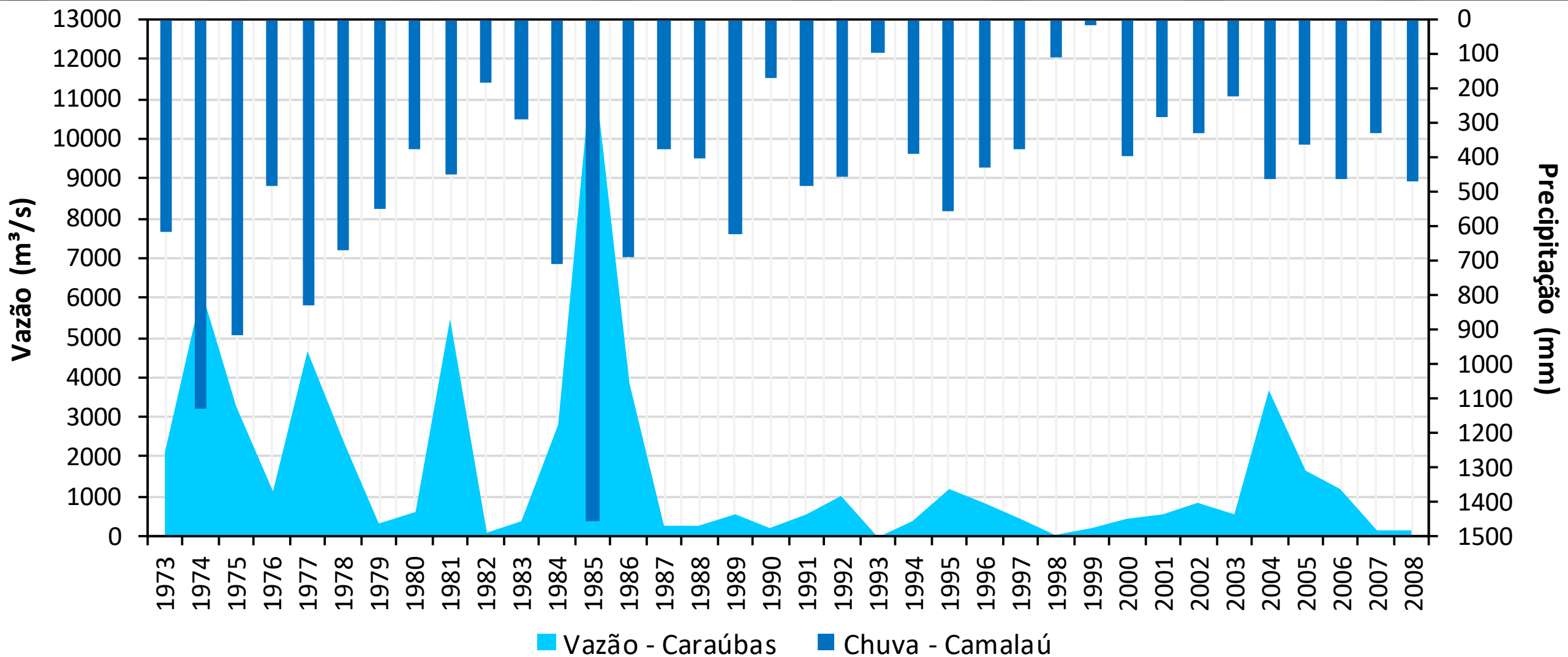
UEPB

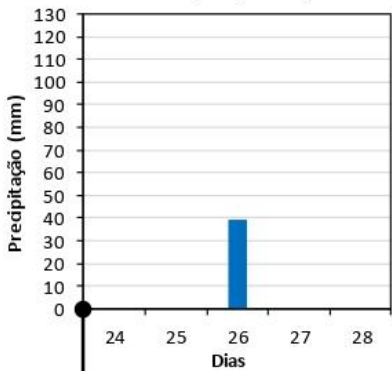
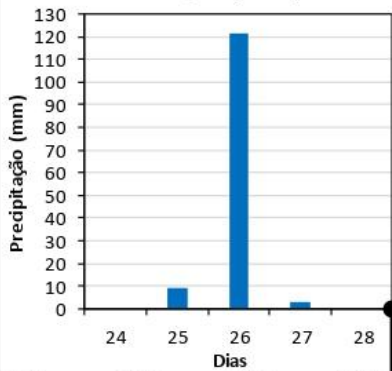
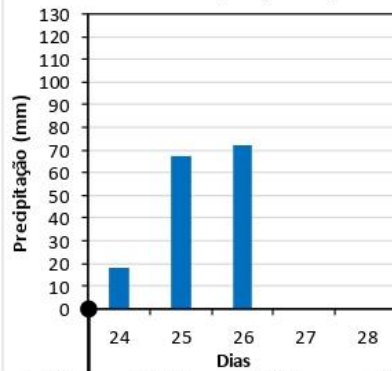
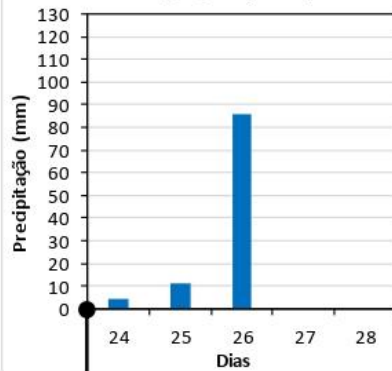
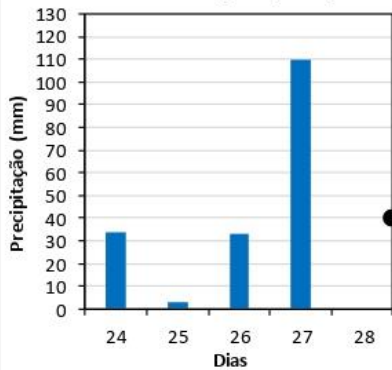
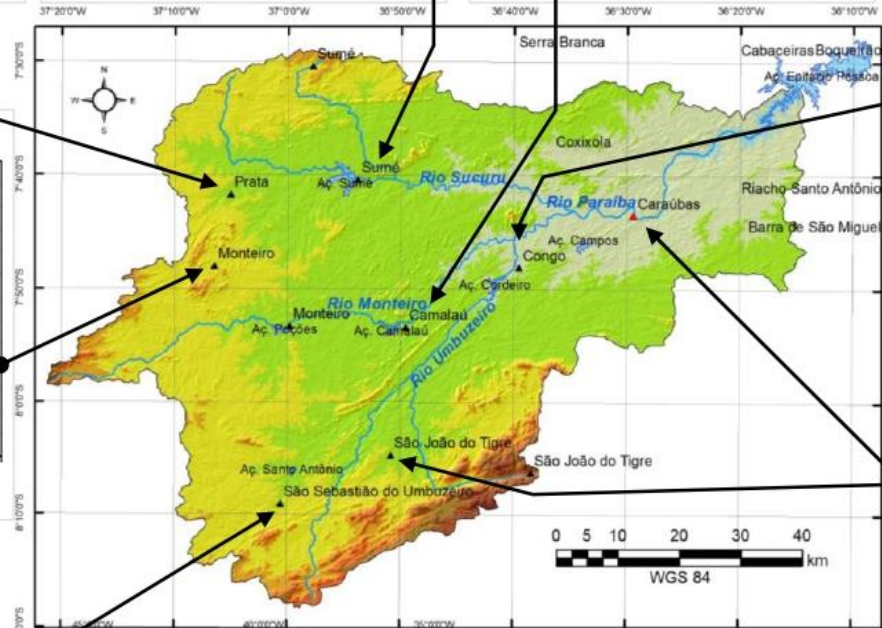
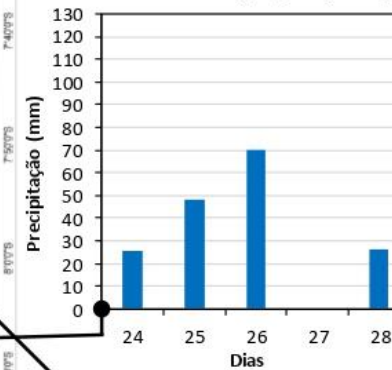
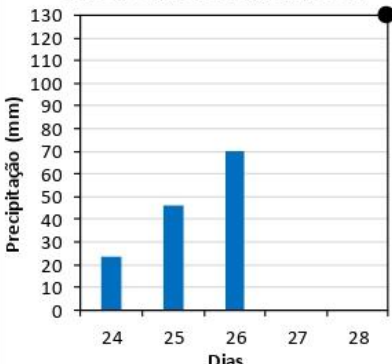
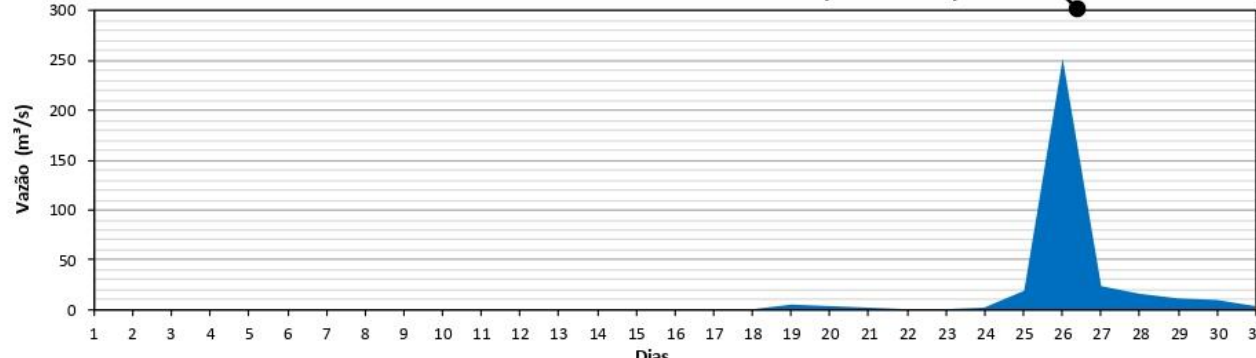


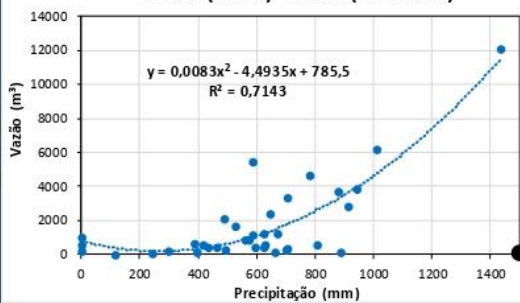
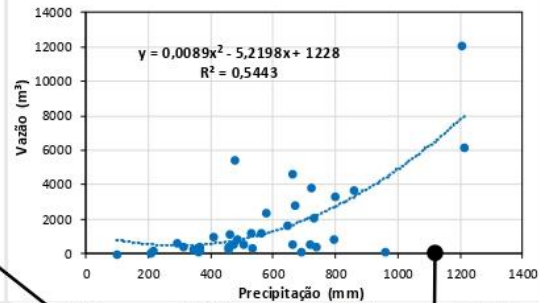
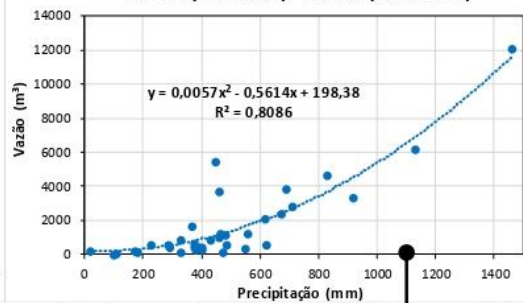
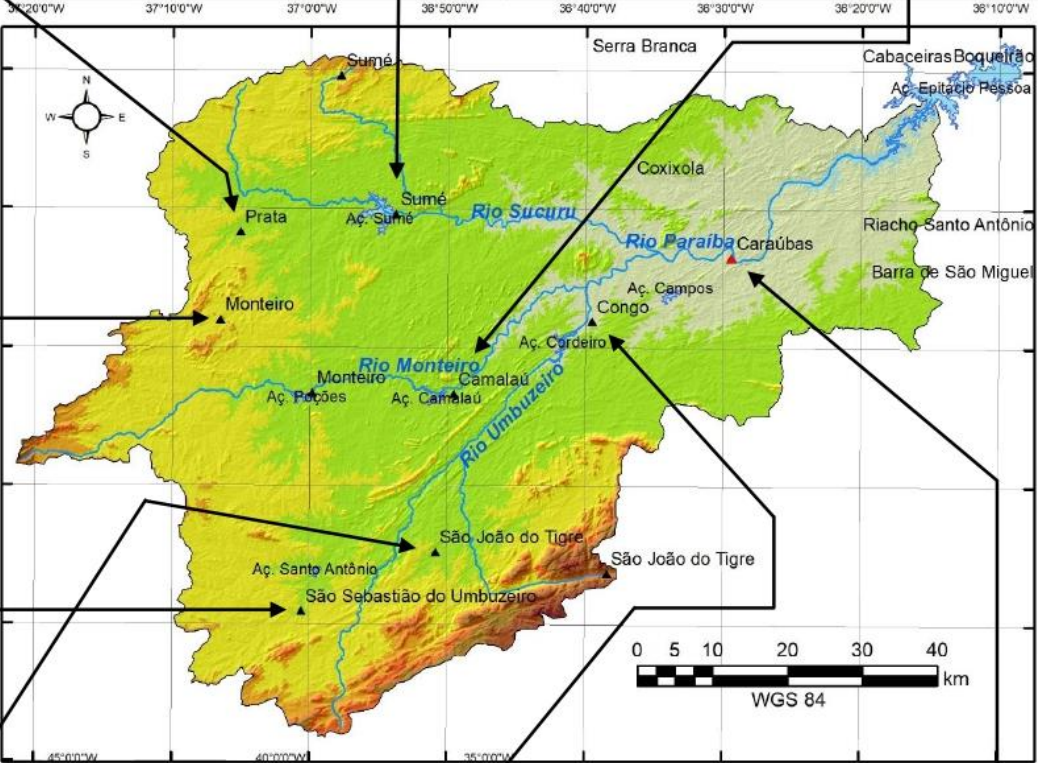
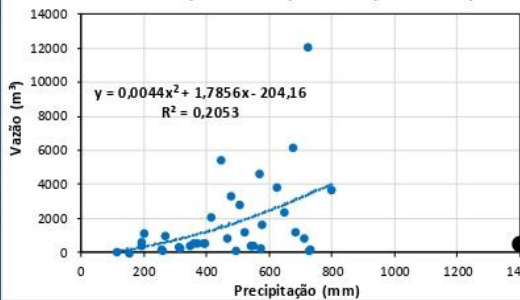
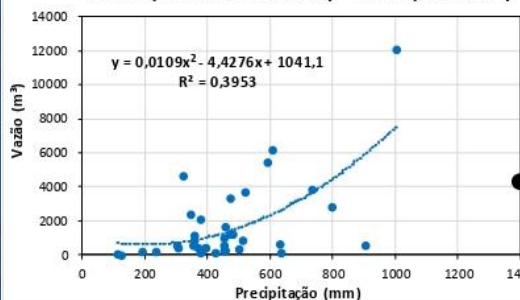
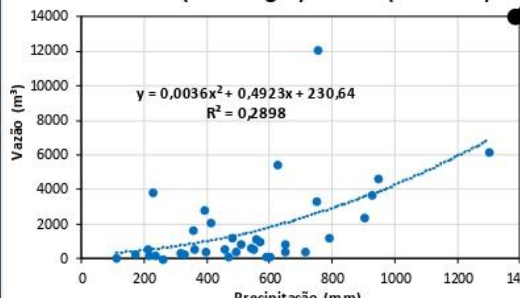
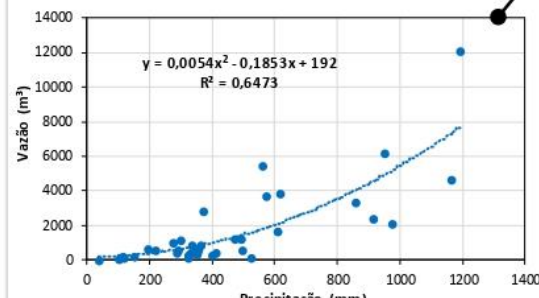
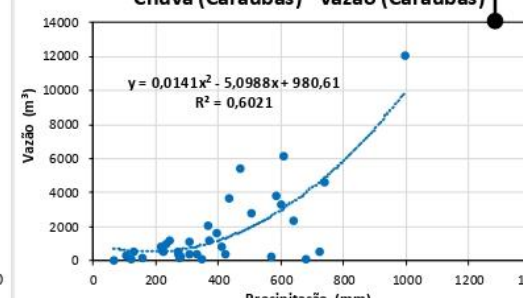


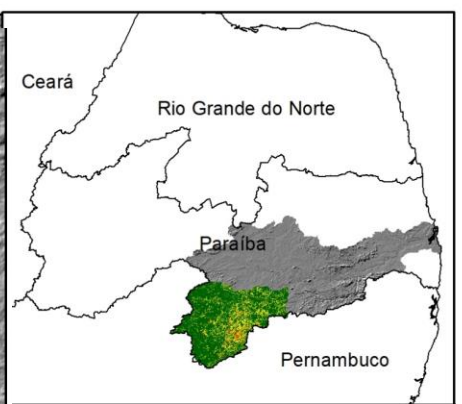
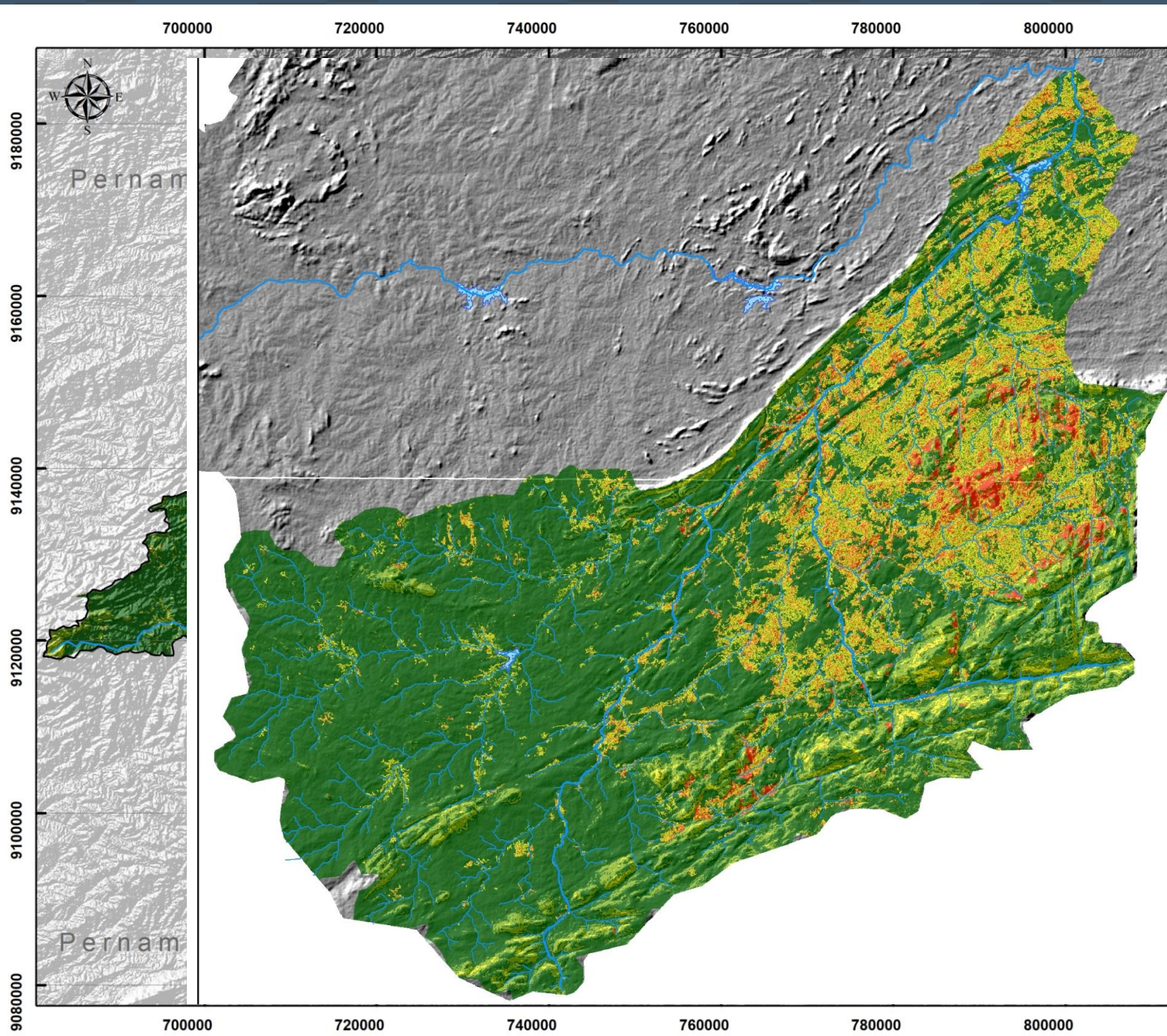
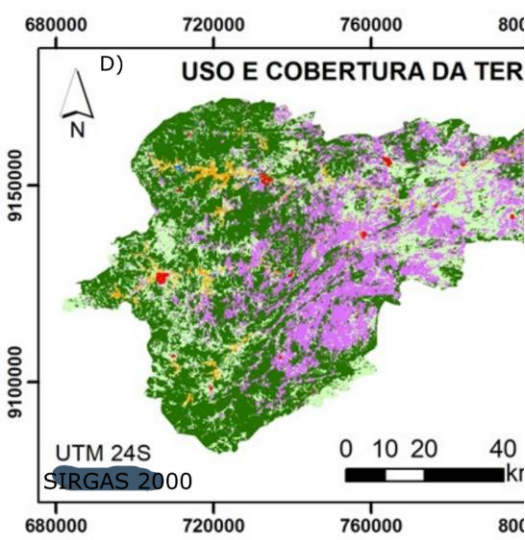
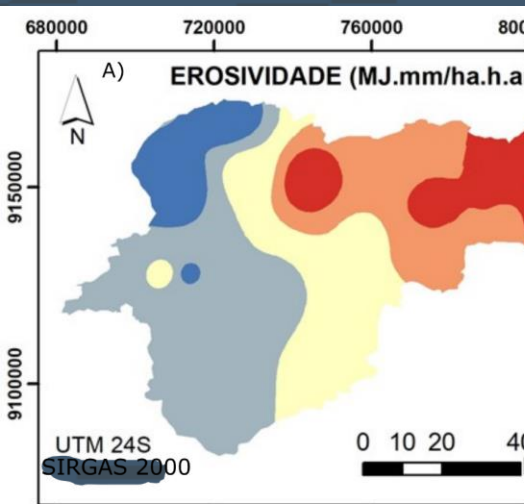


Pior ano 0%
Média de fluxo 36,7% do ano
Melhor ano 76%

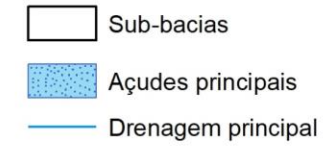


Prata (mar/1997)**Sumé (mar/1997)****Camalaú (mar/1997)****Congo (mar/1997)****Monteiro (mar/1997)****São João do Tigre (mar/1997)****São S. Umbuzeiro (mar/1997)****Vazão do Rio Paraíba em Caraúbas (mar/1997)**

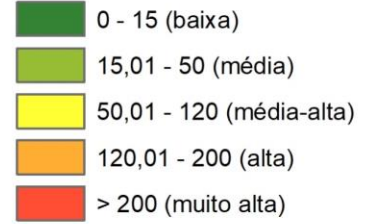
Chuva (Prata) - Vazão (Caraúbas)**Chuva (Sumé) - Vazão (Caraúbas)****Chuva (Camalaú) - Vazão (Caraúbas)****Chuva (Monteiro) - Vazão (Caraúbas)****Chuva (São S. Umbuzeiro) - Vazão (Caraúbas)****Chuva (São J. Tigre) - Vazão (Caraúbas)****Chuva (Congo) - Vazão (Caraúbas)****Chuva (Caraúbas) - Vazão (Caraúbas)**



Legenda



Perdas de solo (ton/ha/ano)



Equação Universal de Perdas de Solo (EUPS) na Bacia do Alto Rio Paraíba 2020

Obrigado pela atenção!



geghat.uepb

Grupo de Estudos Geomorfotológicos e Hidroecológicos de Aterramentos Transmissivos

Geghat



geomorphotos

