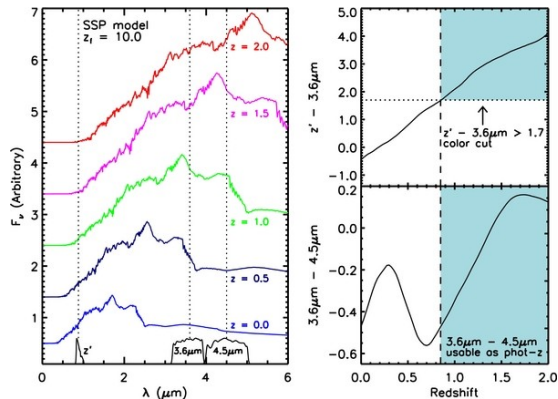
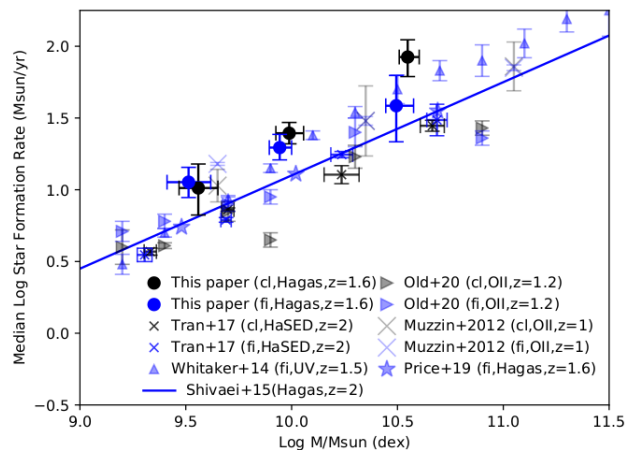


Baby Galaxy Clusters in the Teenage Universe

Dr Julie Nantais & SpARCS & Gogreen Collaborations



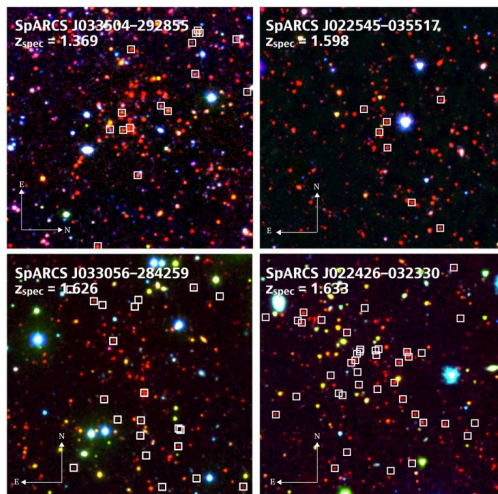
IR Selection (Muzzin+13): finds galaxies with stars of all ages at $z > 1.3$



IR selected clusters at $z > 1.3$ (Nantais+16)

Nantais+20, compared to literature: Star formation rates of star-forming galaxies same as field or only slightly suppressed. Delayed-then-rapid quenching?

Van der Burg+20: mass functions suggest that “environment quenching” is not distinguishable from “mass quenching” at high z



Nantais+17: changes in cluster quenching efficiency

