

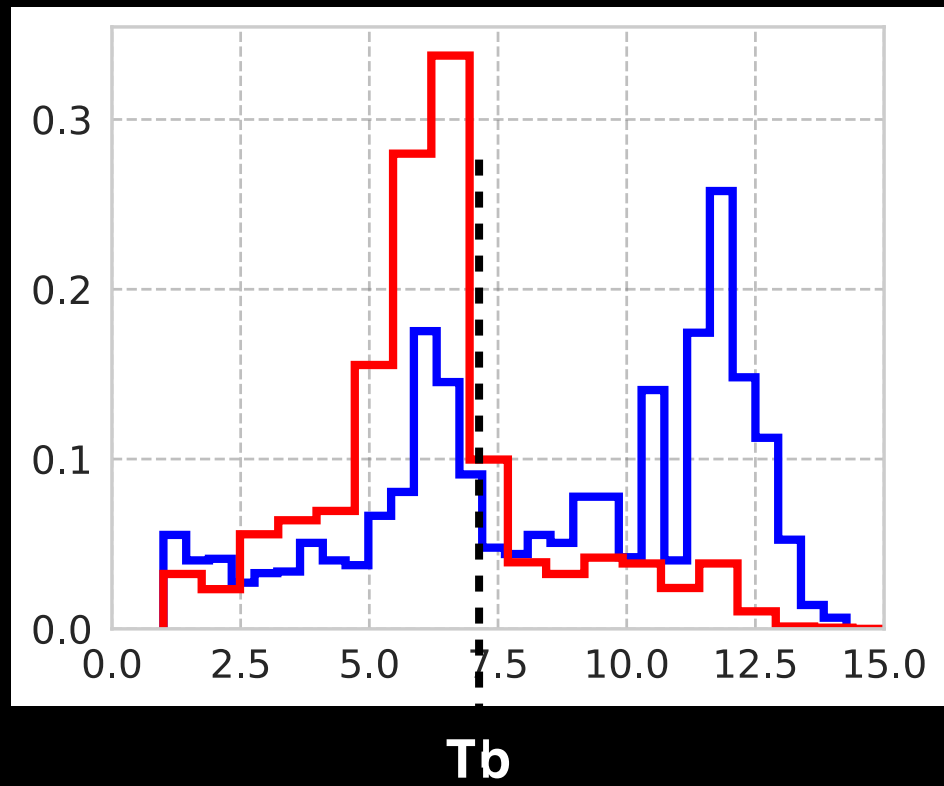
Only the good die young: identifying star forming Elliptical galaxies using S-PLUS data



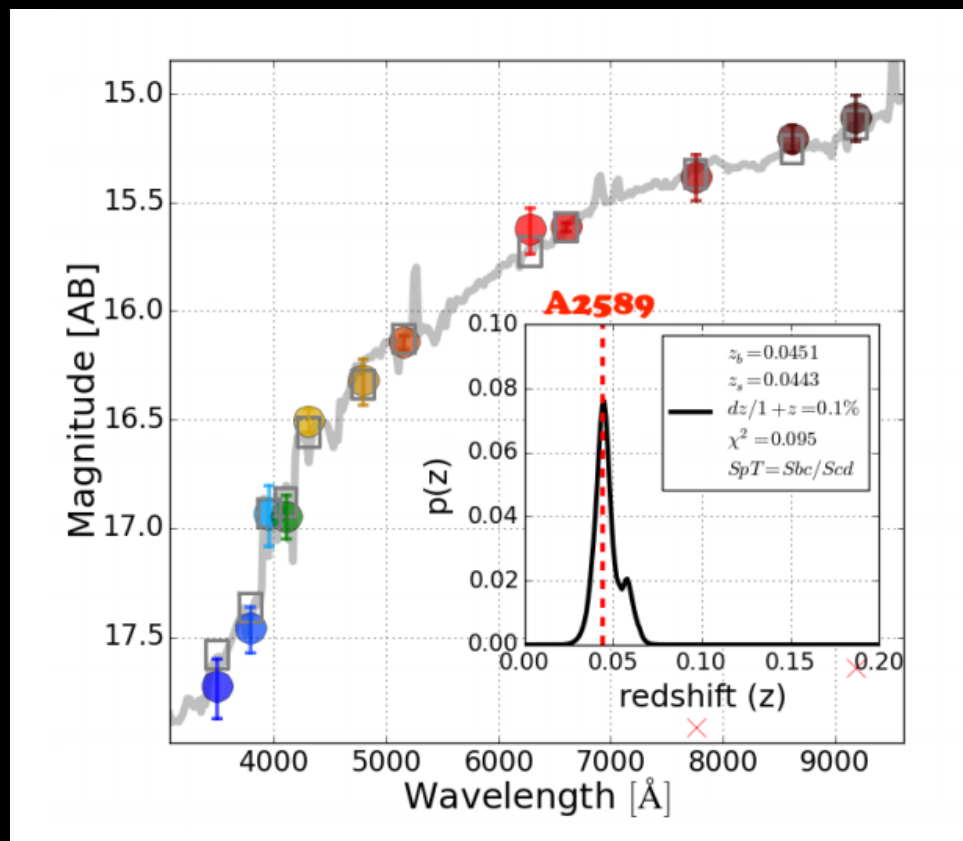
- A. Cortesi, A. Smith, G. Lucatelli, C. Mendes de Oliveira, K. Saha, S. Dhiwar, M.L. Buzzo, K. Menendez-Delmestre, T. Signorini, C. Bom, F. Ferrari, P. Dimauro, M. Grossi & the S-PLUS morphological group

Dedicated to all the victims of police violence
in Rio de Janeiro
Brazil
and the world

The idea

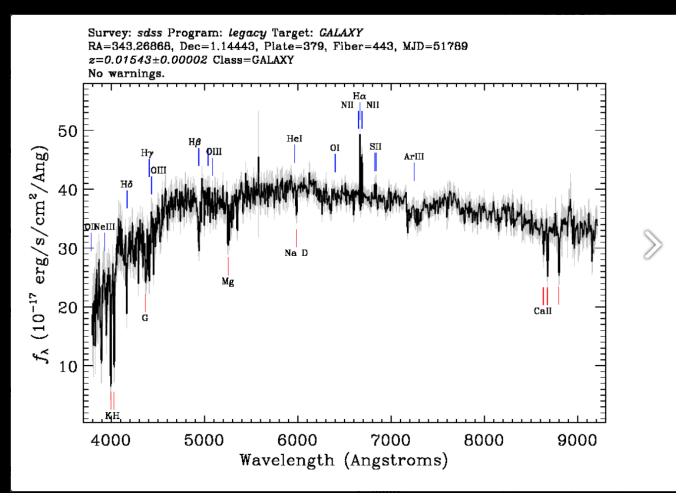
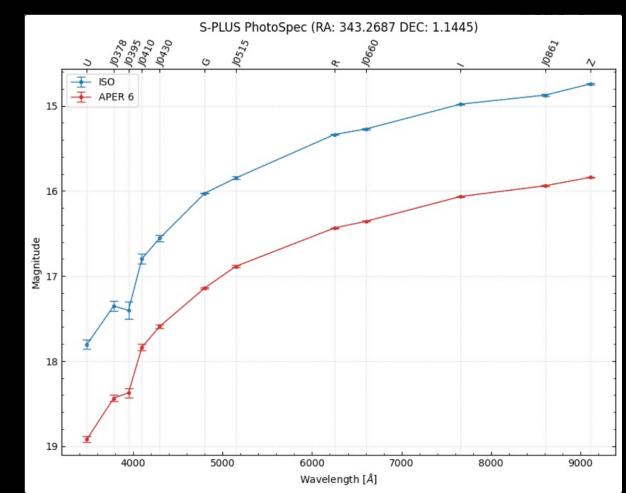
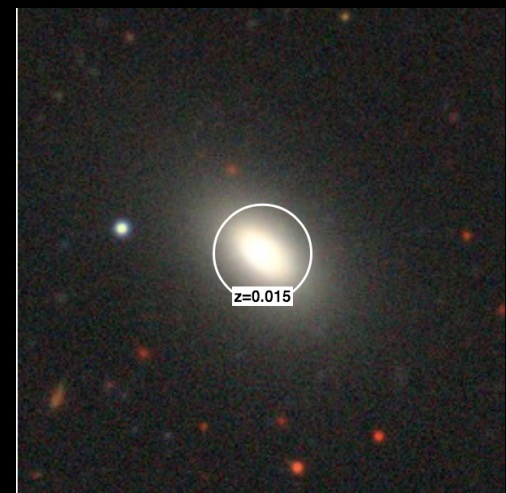
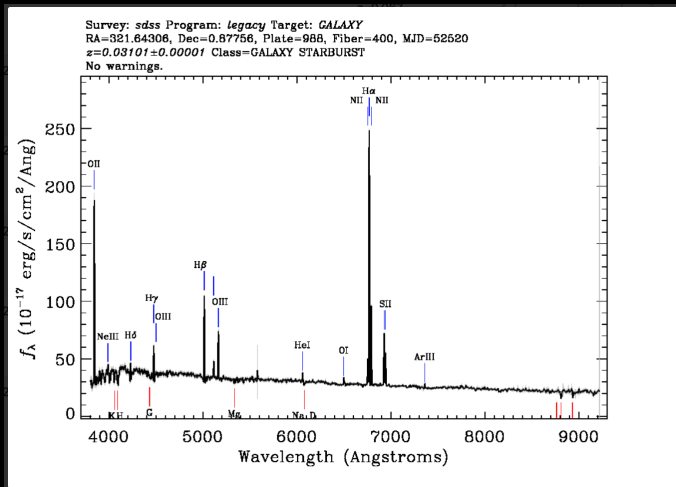
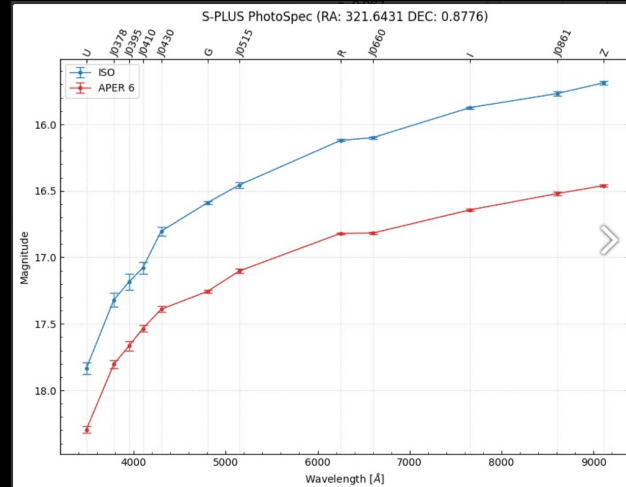
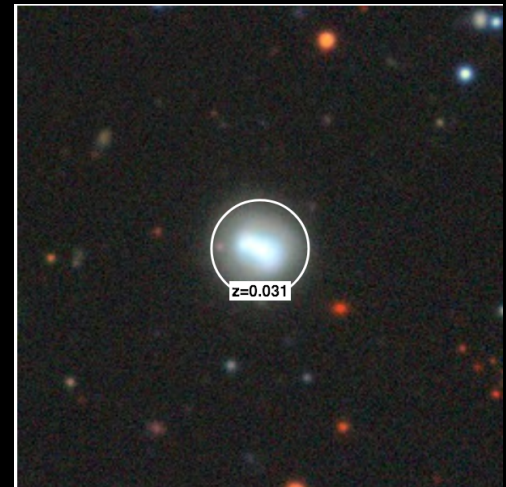
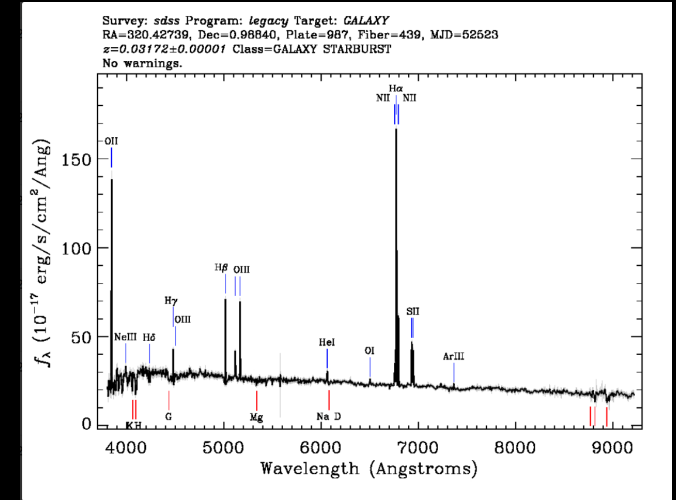
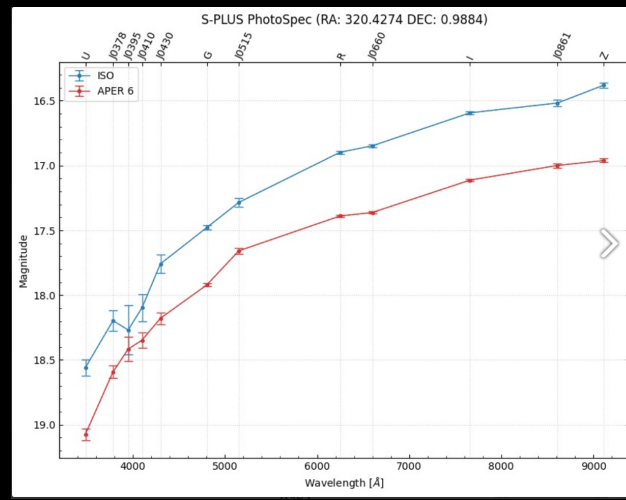
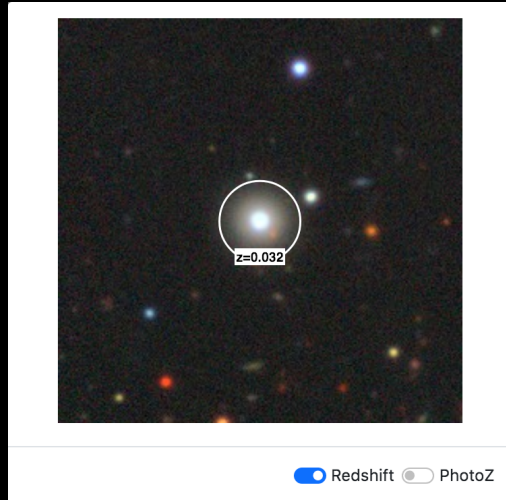
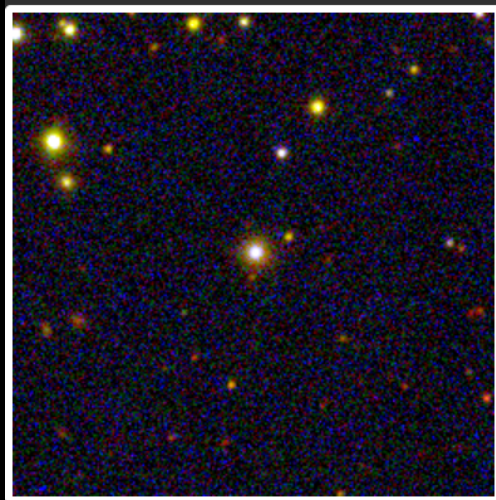


E/S classification
(Bom et al 2021)

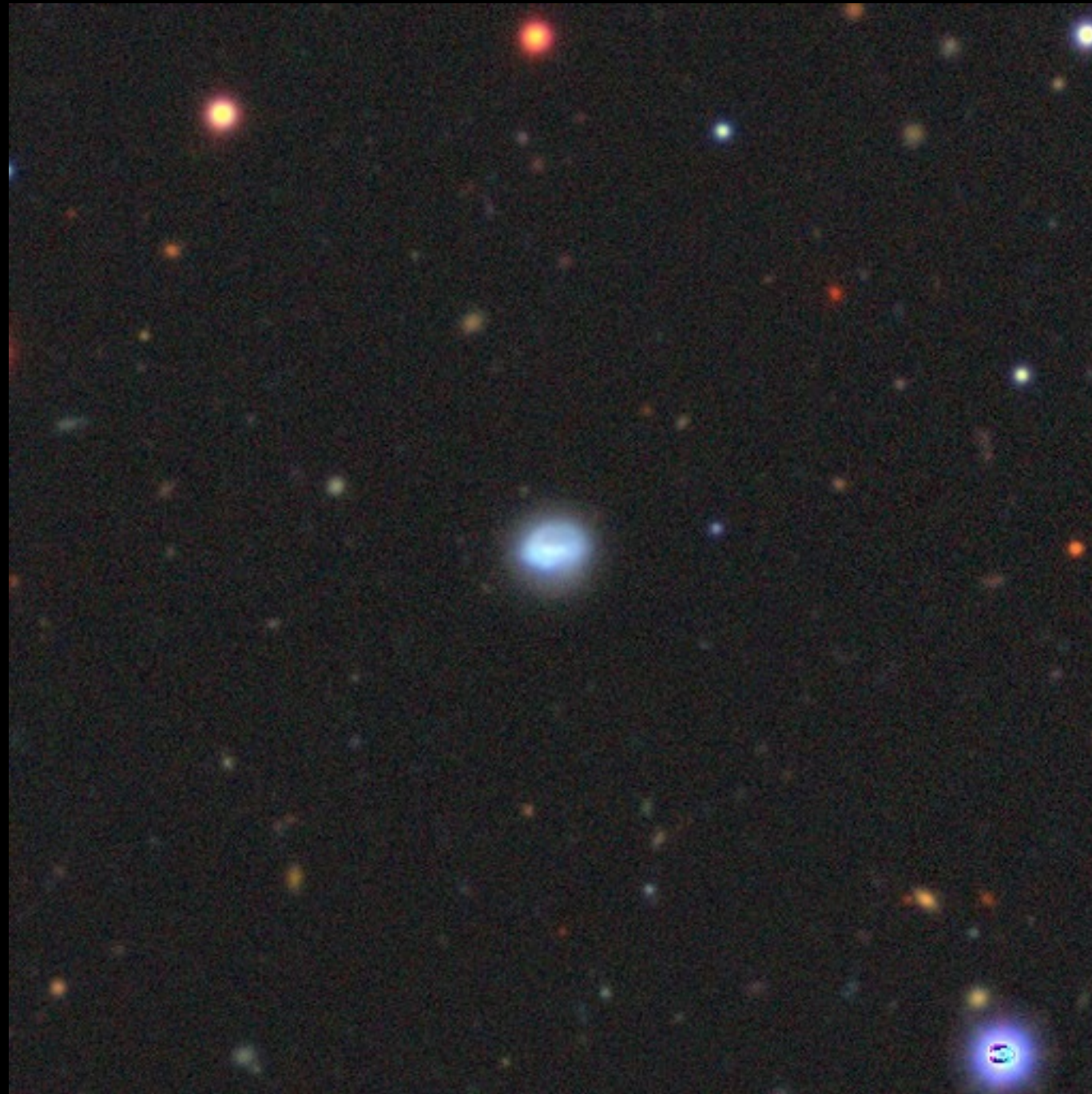


$T_b > 6.5$
(Molino et al. 2020)

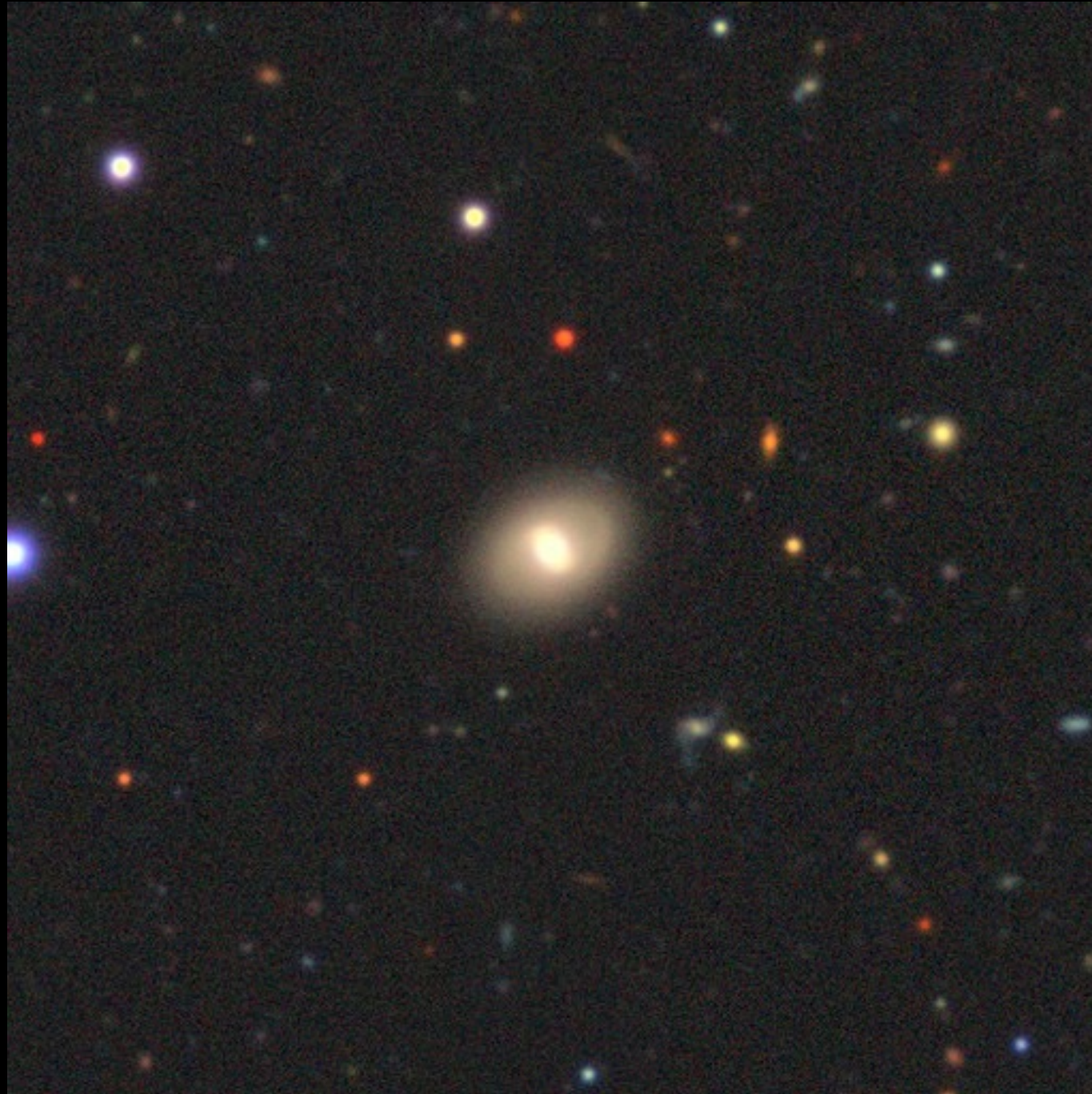
How do they look like



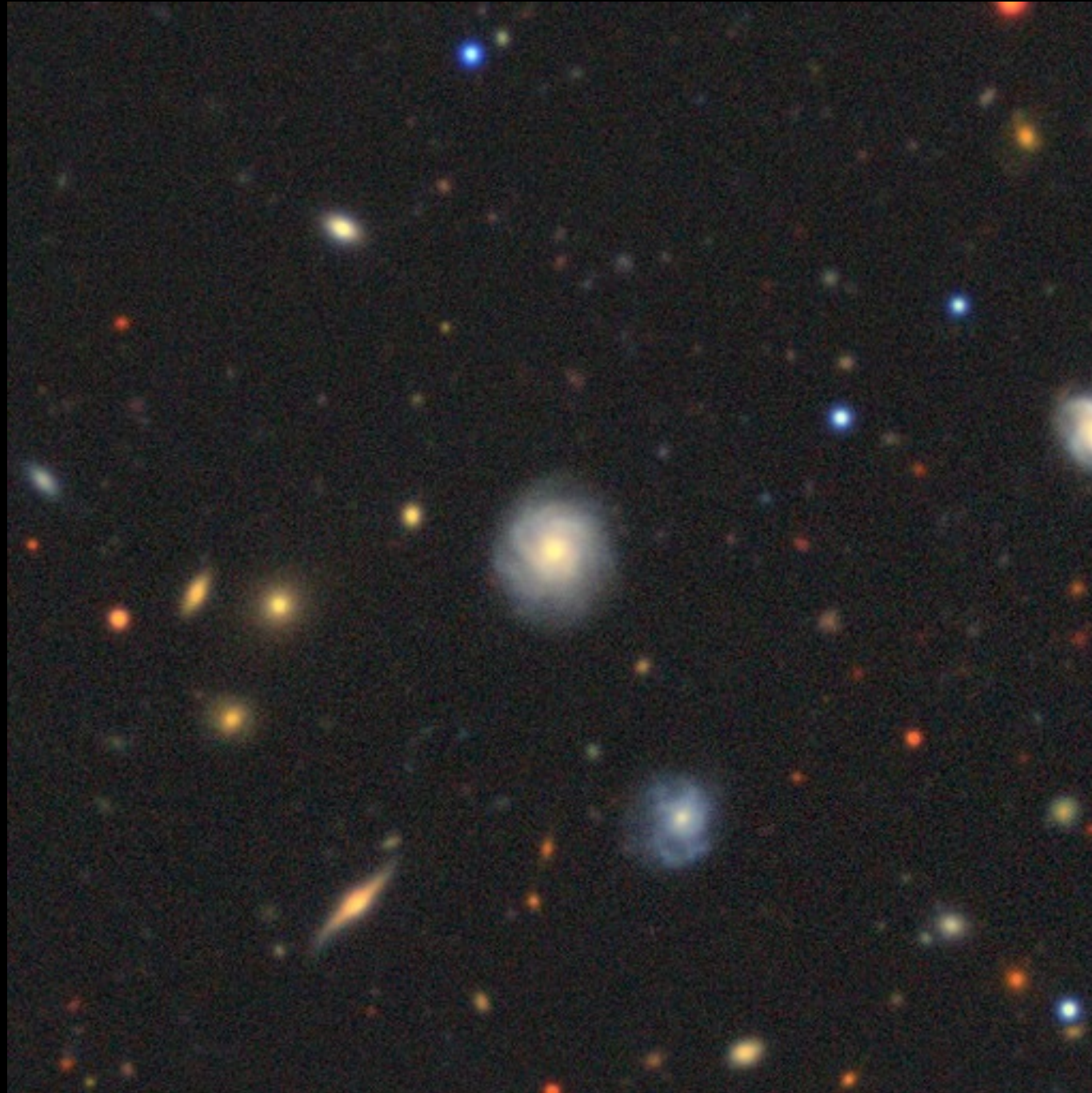
Do they all look like this?



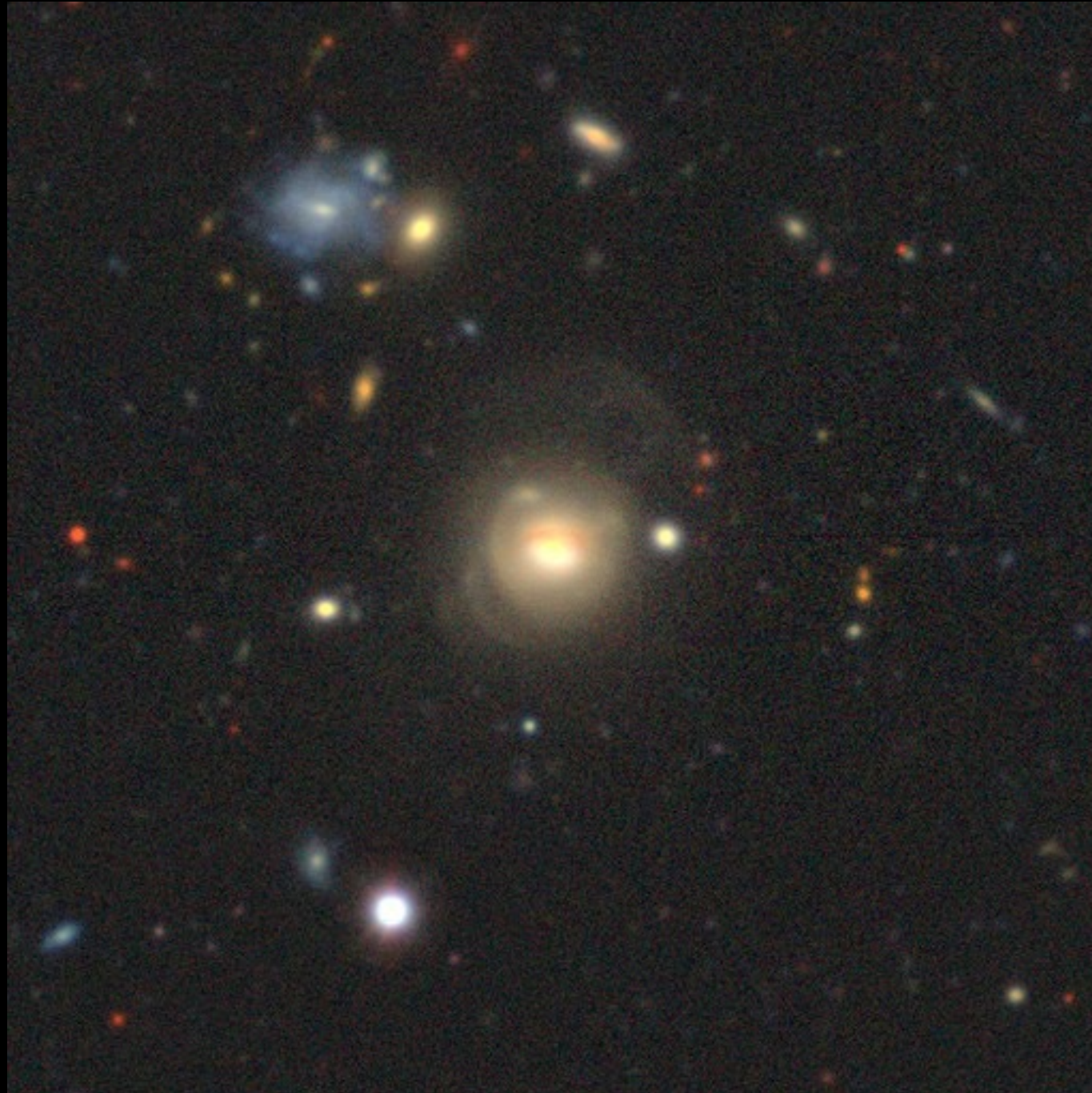
Do they all look like this?

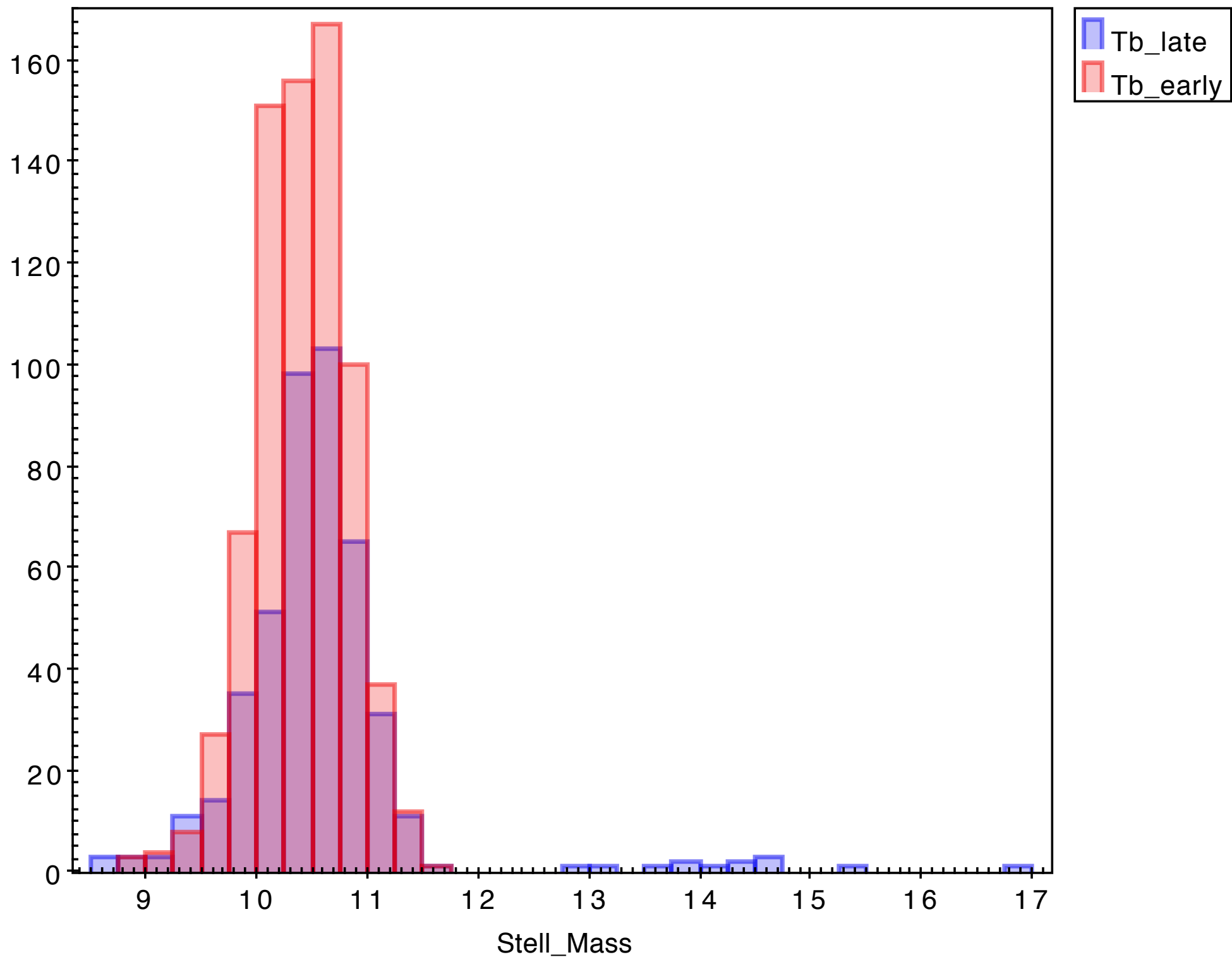


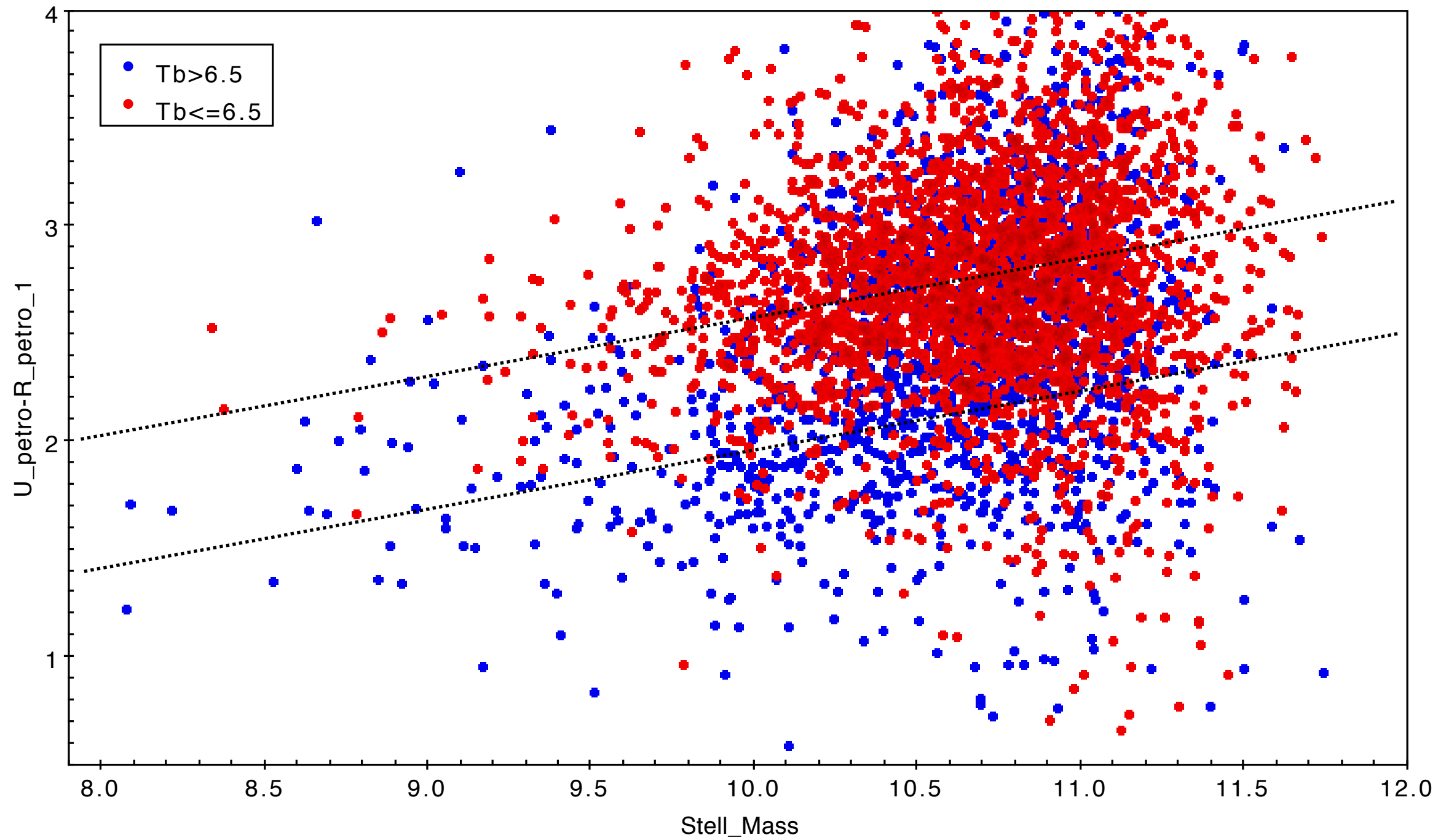
Do they all look like this?

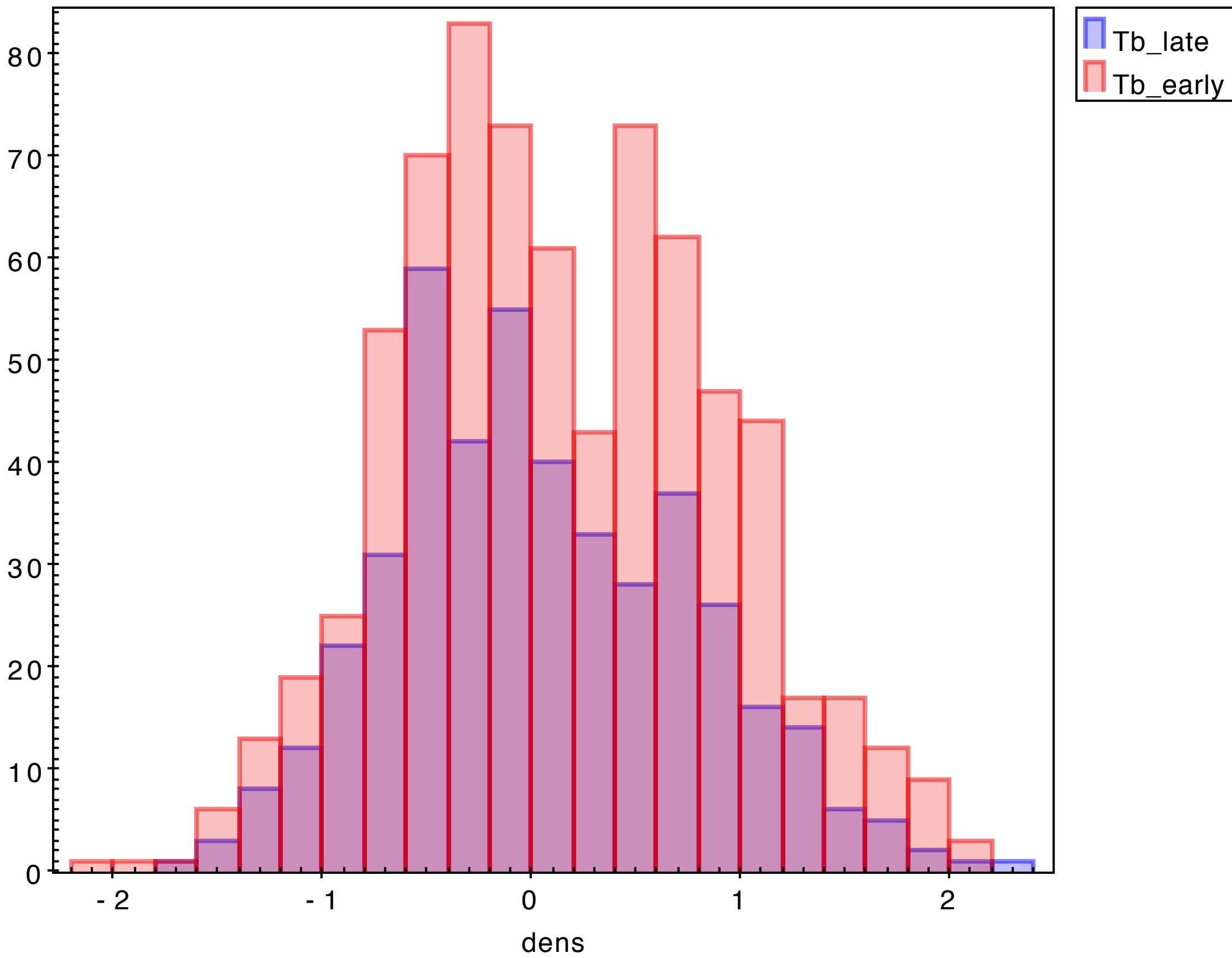


Do they all look like this?









Baldry et al 2006: dens <-0.8 low density - dens > 0.8 high density

Work in progress in collaboration with A. Smith,
using Cigale

